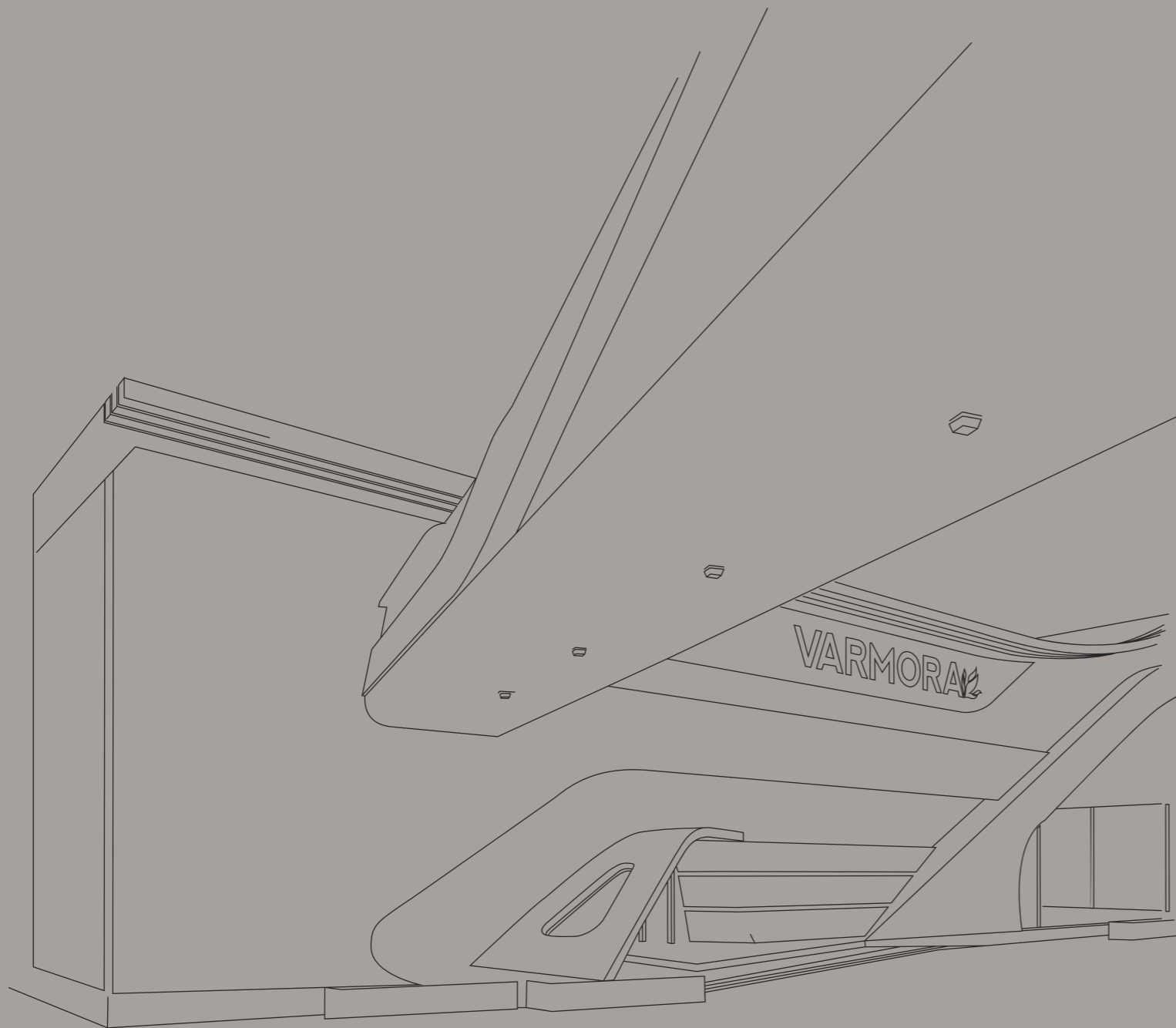




60x
60cm | FULL BODY

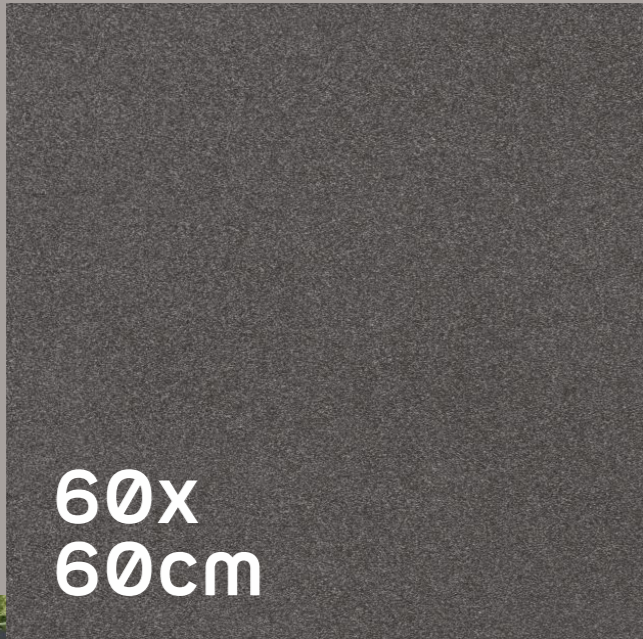


ABOUT US

Varmora Granito Pvt. Ltd. is a flagship company of the Varmora Group and a leading manufacturer of high-quality ceramic tiles, bath and sanitary products, and other building materials. Established in 1994, Varmora Granito has grown to become one of the largest manufacturers in the industry, with in-house production capacity of 35 msm per annum. With a focus on innovation, sustainability, and customer satisfaction, Varmora Granito is committed to providing its customers with the best products and services worldwide. Varmora now boasts 317 exclusive brand outlets (EBOs) and 2,000+ multi-brand outlets (MBOs) in their network. Whether you're looking for stylish tiles, durable bath and sanitary products, or other building materials, Varmora Granito has you covered.

To know more about Varmora Granito visit www.varmora.com

Perfect
For Urban
Environments



60x
60cm



WALL &
FLOOR



RANDOM

INDEX



9MM | THICKNESS

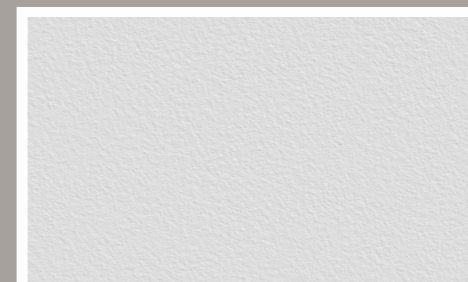


16MM | THICKNESS

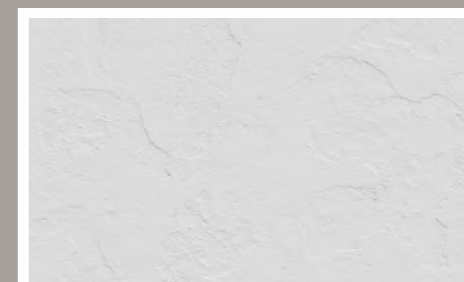
FULL BODY MATRIX

DESIGN NAME	FINISH		PUNCH		
	MATT	GLOSS	GRAVITA	HAMMERSTONE	STAPPER
PRISTONE	○	○	○		
LEPOLA BLACK	○		○	○	○
LEPOLA WHITE	○		○	○	○
MARMO NERO	○	○	○		
MARMO SILVER	○	○	○		
MARMO BROWN	○	○	○		
GRIPSOM BEIGE	○	○	○		
GRIPSOM DOVE	○	○	○		
GRIPSOM VERDE	○		○	○	○
GRIPSOM GREY LT	○		○	○	○
GRIPSOM GREY DK	○		○	○	○
MUD	○	○	○		

AVAILABLE PUNCH



GRAVITA



HAMMERSTONE



STAPPER



60x
60cm | 9mm THICKNESS

FULL BODY COLLECTION

Surfaces infused with the essence of nature exude an exquisite and authentic appeal while ensuring long-lasting durability. These fullbody surfaces are the epitome of choice for spaces that endure high footfall, thanks to their inherent strength and enduring beauty.

FEATURES



Low Water
Absorption



Easy to Clean



Zero
Maintenance



Eco Friendly



Anti Skid



Highly
Durable



Abrasion
Resistance



Suitable for
Outdoor & Indoor

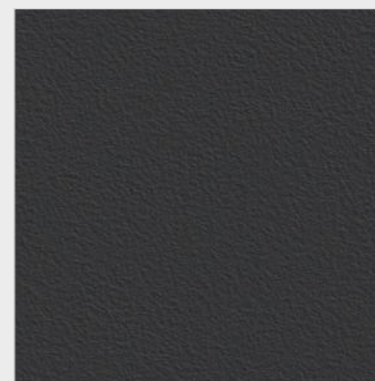




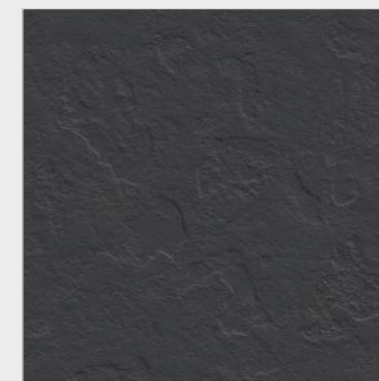
Finish : Matt



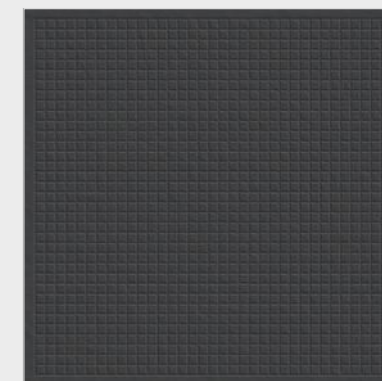
LEPOLA BLACK MT



GRAVITA
LEPOLA BLACK



HAMMERSTONE
LEPOLA BLACK



STAPPER
LEPOLA BLACK



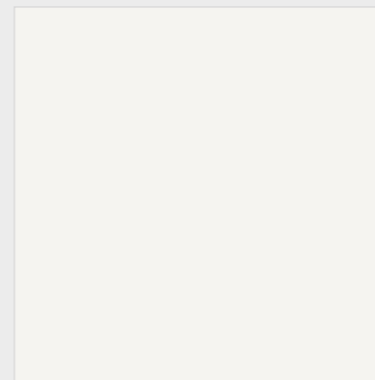
* Touch the QR to unlock 360° view.



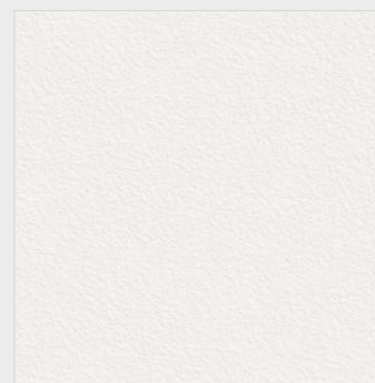
FULL BODY COLLECTION



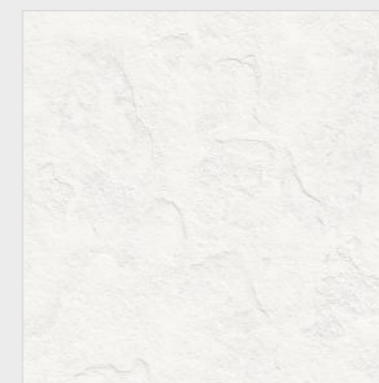
Finish : Matt



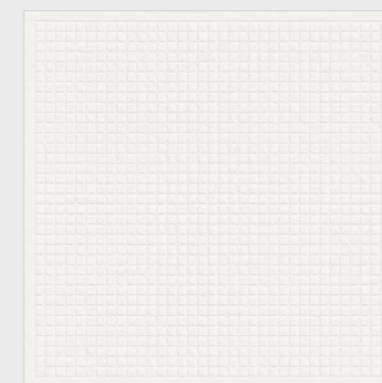
LEPOLA WHITE MT



GRAVITA
LEPOLA WHITE



HAMMERSTONE
LEPOLA WHITE



STAPPER
LEPOLA WHITE



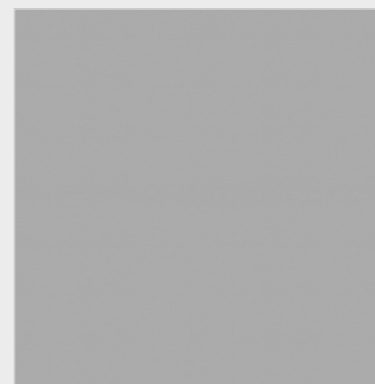
* Touch the QR to unlock 360° view.



FULL BODY COLLECTION



Finish : Matt



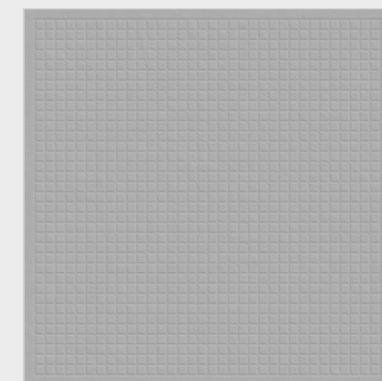
GRIPSOM GREY LT MT



GRAVITA
GRIPSOM GREY LT



HAMMERSTONE
GRIPSOM GREY LT



STAPPER
GRIPSOM GREY LT



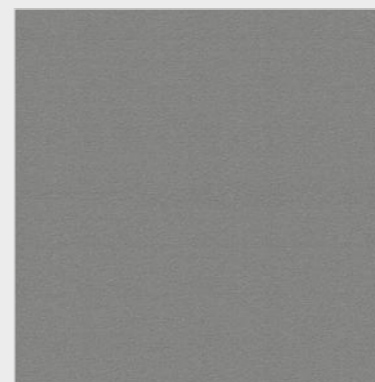
* Touch the QR to unlock 360° view.



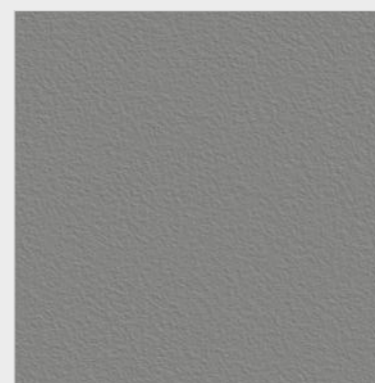
FULL BODY COLLECTION



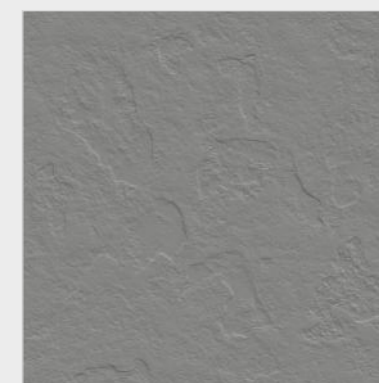
Finish : Matt



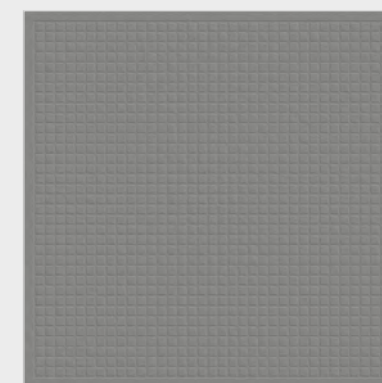
GRIPSOM GREY DK MT



GRAVITA
GRIPSOM GREY DK



HAMMERSTONE
GRIPSOM GREY DK



STAPPER
GRIPSOM GREY DK



* Touch the **QR** to unlock 360° view.



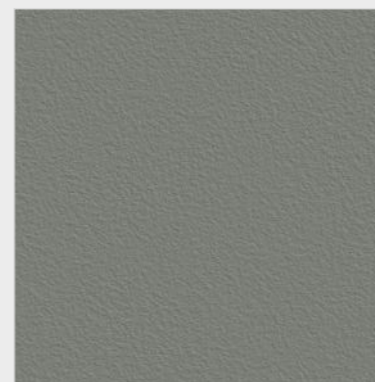
FULL BODY COLLECTION



Finish : Matt



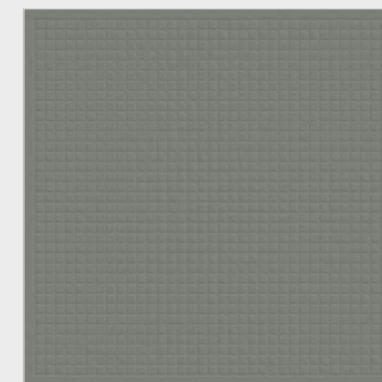
GRIPSOM VERDE MT



GRAVITA
GRIPSOM VERDE



HAMMERSTONE
GRIPSOM VERDE



STAPPER
GRIPSOM VERDE



* Touch the QR to unlock 360° view.



FULL BODY COLLECTION



Finish : Matt



GRIPSOM DOVE MT



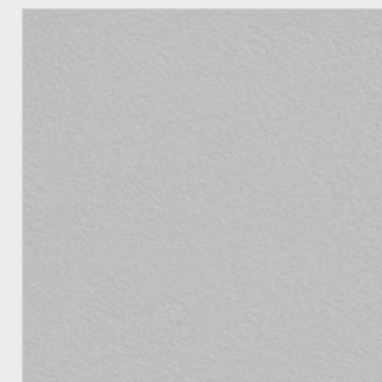
Finish : Glossy



GRIPSOM DOVE GL



Finish : Matt



GRAVITA GRIPSOM DOVE

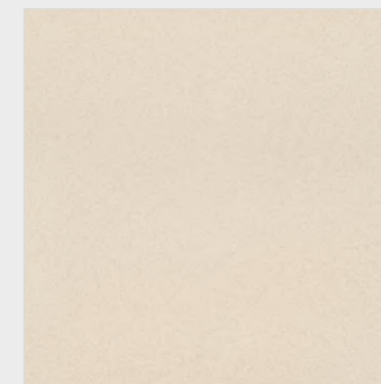


* Touch the QR to unlock 360° view.

FULL BODY COLLECTION



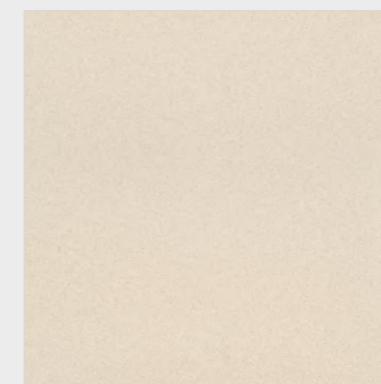
Finish : Matt



GRIPSOM BEIGE MT



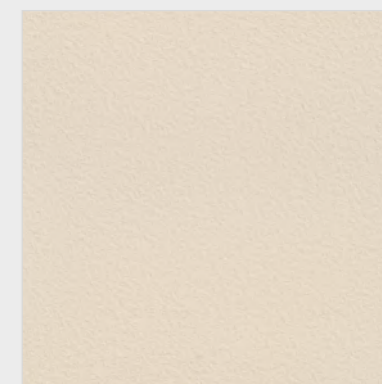
Finish : Glossy



GRIPSOM BEIGE GL



Finish : Matt



GRAVITA GRIPSOM BEIGE



* Touch the QR to unlock 360° view.



FULL BODY COLLECTION



FULL BODY COLLECTION



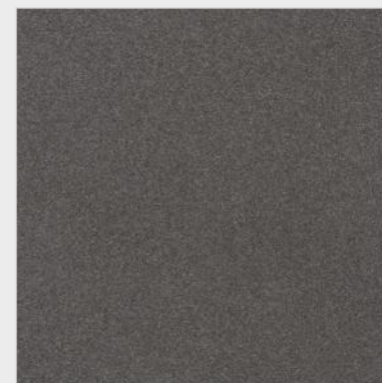
Finish : Matt



MARMO NERO MT



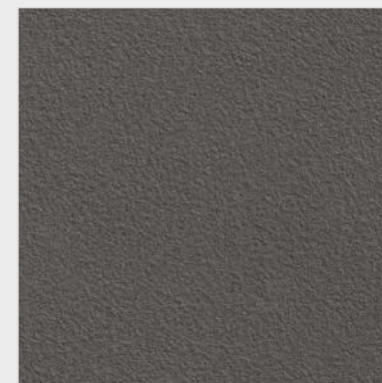
Finish : Glossy



MARMO NERO GL



Finish : Matt



GRAVITA MARMO NERO



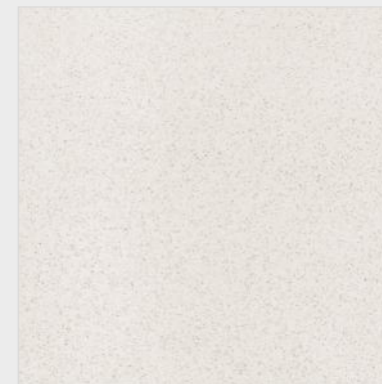
* Touch the QR to unlock 360° view.



FULL BODY COLLECTION



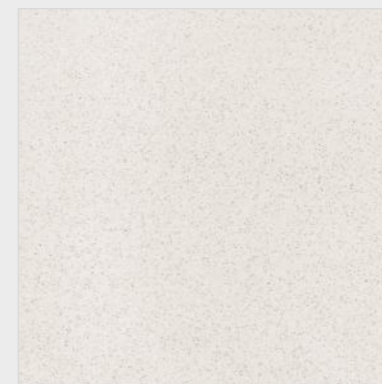
Finish : Matt



MARMO SILVER MT



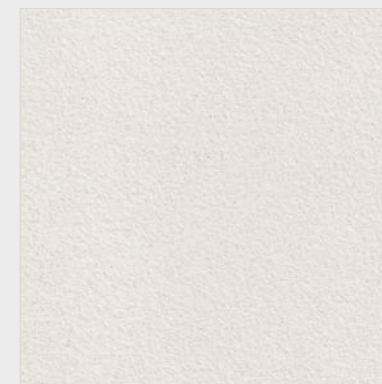
Finish : Glossy



MARMO SILVER GL



Finish : Matt



GRAVITA MARMO SILVER



* Touch the QR to unlock 360° view.



FULL BODY COLLECTION



Finish : Matt



MARMO BROWN MT



Finish : Glossy



MARMO BROWN GL



Finish : Matt



GRAVITA MARMO BROWN



* Touch the QR to unlock 360° view.



Finish : Matt



MUD MT



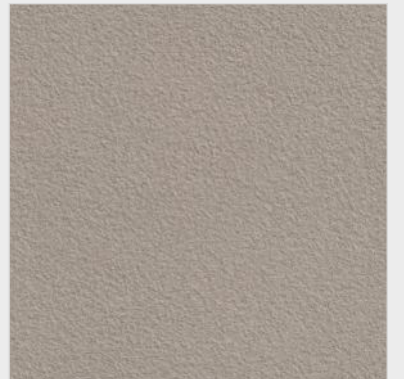
Finish : Glossy



MUD GL



Finish : Matt



GRAVITA MUD



* Touch the QR to unlock 360° view.

FULL BODY COLLECTION





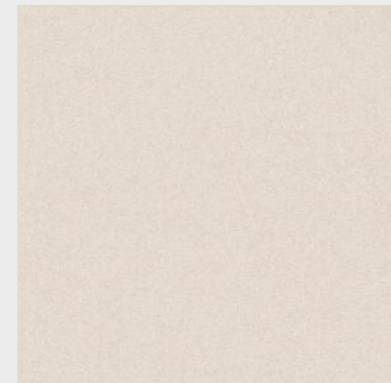
Finish : Matt



PRISTONE MT



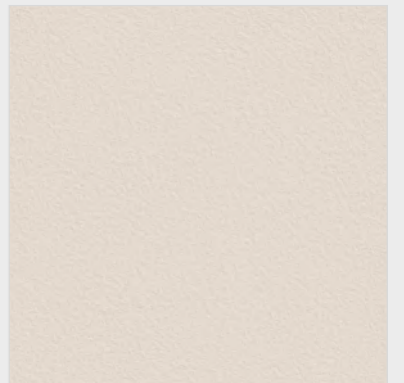
Finish : Glossy



PRISTONE GL



Finish : Matt



GRAVITA PRISTONE



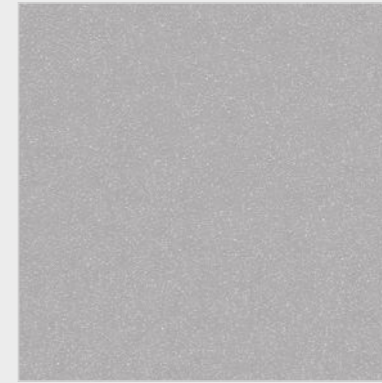
* Touch the QR to unlock 360° view.

FULL BODY COLLECTION

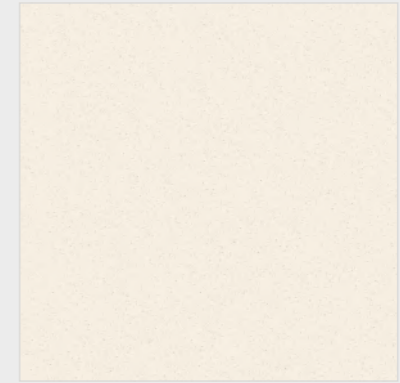




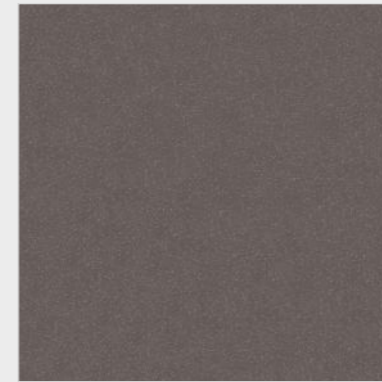
Finish : Matt



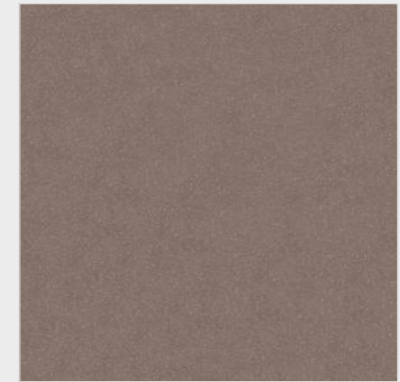
ROMAN GREY



ROMAN IVORY



ROMAN BLACK



ROMAN CHOCO



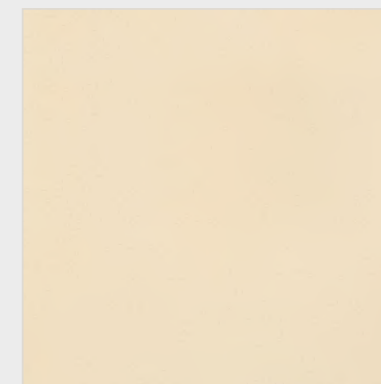
FULL BODY COLLECTION



Finish : Matt



TERASTONE PEARL



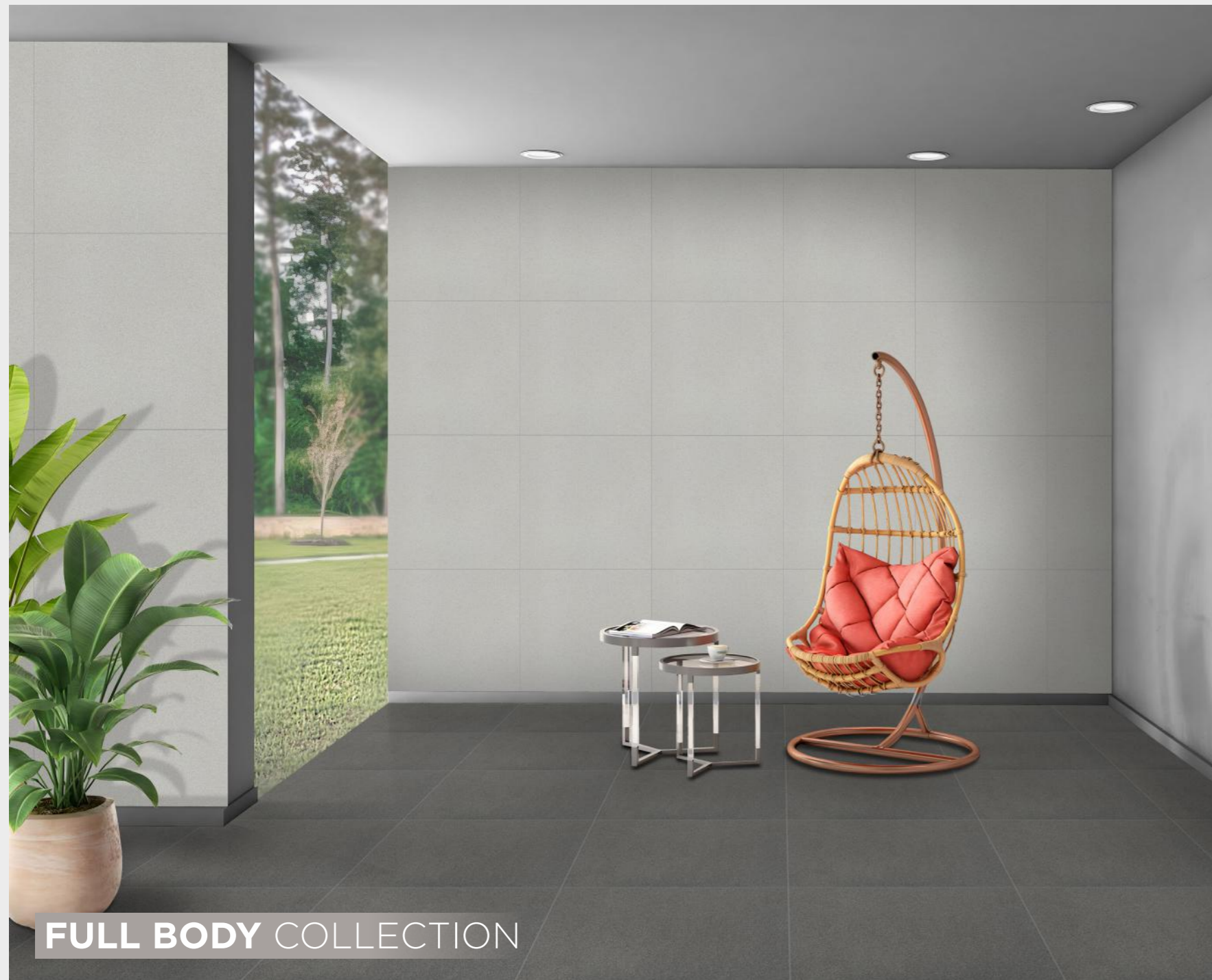
TERASTONE CREMA



TERASTONE NERO



TERASTONE CHOCO



FULL BODY COLLECTION



Finish : Matt



TERASTONE BEIGE



TERASTONE OLIVE



TERASTONE VERDE



FULL BODY COLLECTION



60x
60cm | 16mm THICKNESS

FULL BODY COLLECTION

Surfaces infused with the essence of nature exude an exquisite and authentic appeal while ensuring long-lasting durability. These fullbody surfaces are the epitome of choice for spaces that endure high footfall, thanks to their inherent strength and enduring beauty.

FEATURES



Low Water Absorption



Easy to Clean



Zero Maintenance



Eco Friendly



Anti Skid



Highly Durable



Abrasion Resistance

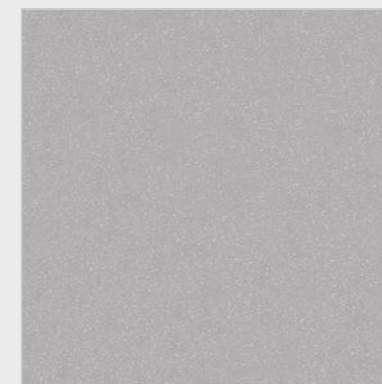


Suitable for Outdoor & Indoor

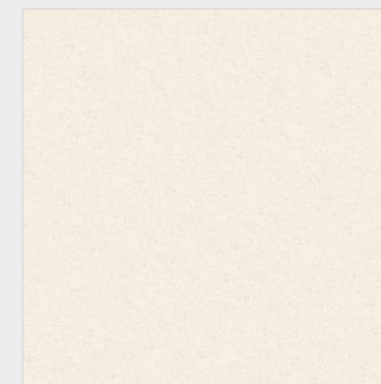




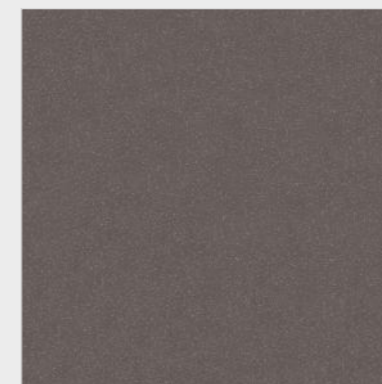
Finish : Matt



TECHSTONE GREY



TECHSTONE IVORY



TECHSTONE BLACK



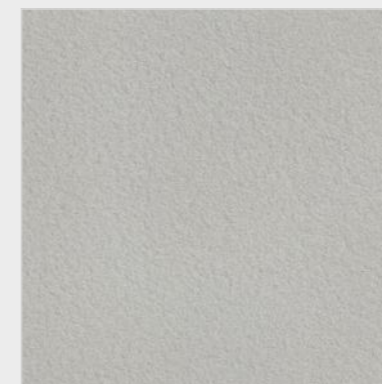
TECHSTONE CHOCO



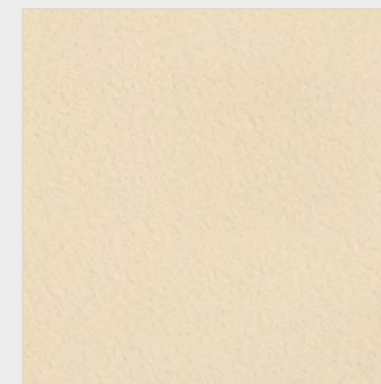
FULL BODY COLLECTION



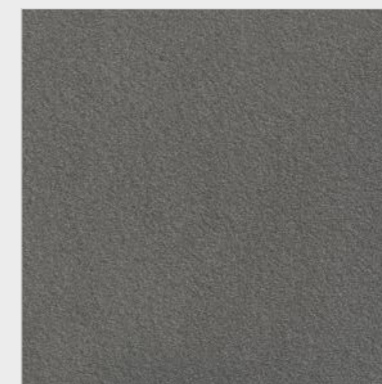
Finish : Matt



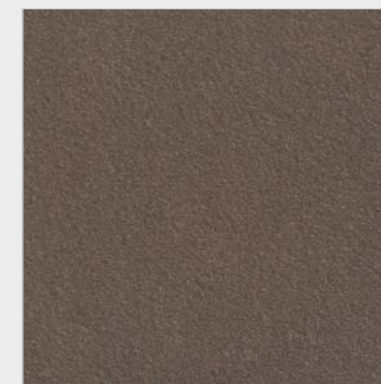
KRESTONE PEARL



KRESTONE CREMA



KRESTONE NERO



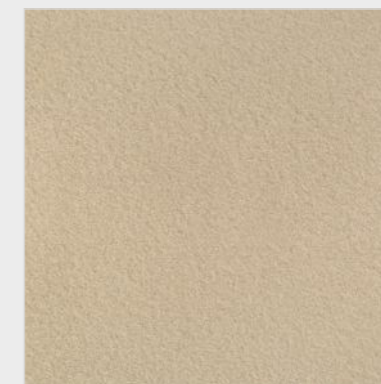
KRESTONE CHOCO



FULL BODY COLLECTION



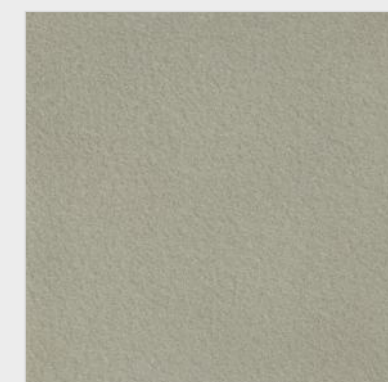
Finish : Matt



KRESTONE BEIGE



KRESTONE OLIVE



KRESTONE VERDE



FULL BODY COLLECTION

Technical Specification

FULLBODY

SR. NO.	CHARACTERISTIC	TEST METHOD	IS 15622 :2017 (GROUP B I a)	VARMORA VALUE		
A						
DIMENSION & SURFACE QUALITY						
1	Deviation in Length & Width	IS - 13630 - 1	± 0.10%	± 0.10%		
2	Deviation in Thickness	IS - 13630 - 1	± 5.00%	± 3.50%		
3	Straightness of sides	IS - 13630 - 1	± 0.10%	± 0.10%		
4	Rectangularity	IS - 13630 - 1	± 0.10%	± 0.10%		
5	Surface Flatness	IS - 13630 - 1	± 0.50%	± 0.20%		
6	Surface Quality	IS - 13630 - 1	Minimum 95 % of tiles shall be free from visible defects	95%		
B						
PHYSICAL PROPERTIES						
1	Water Absorption	IS - 13630 - 2	≤0.08%,Avg.	0.06%,Avg.		
2	Modulus of Rapture(N/mm ²)	IS - 13630 - 6	Avg. 35 N/mm ²	Avg. 40 N/mm ²		
3	Breaking Strength (N)	IS - 13630 - 6	Thickness >7.5 mm = 1300 N, Min	Thickness >7.5 mm = 1700 N		
4	Moisture Expansion (mm/m)	IS - 13630 - 3	0.02 Max.	0.01 Max.		
5	Scratch Hardness of Surface (Mohs' Scale)	IS - 13630 - 13	5, Min	5, Min*		
6	Resistance of Surface Abrasion (Glazed tiles)	IS - 13630 - 11	Class II, Min.	Class IV		
7	Co-efficient of linear thermal expansion	IS - 13630 - 4	6x10 ⁻⁶ , Max	6x10 ⁻⁶ , Max		
8	Thermal Shock Resistance	IS - 13630 - 5	10 Cycles, Min	10 Cycles, Pass		
9	Crazing Resistance	IS - 13630 - 9	4 Cycles at 7.5 Bar, Min	4 Cycles, Pass		
10	Impact Resistance-Coefficient of Restitution	IS - 13630 - 14	0.55, Min	0.55, Min		
11	Coefficient of Friction	-	Manufacturer Norms	Manufacturer Norms		
12	Frost Resistance	IS - 13630 - 10	Manufacturer Norms	No Damage		
13	Resistance to Deep Abrasion for Unglazed Tiles (mm)	IS - 13630 - 12	140,Max	140,Max		
14	Bulk Density (g/cc)	IS - 13630 - 2	2.2, Min	2.3, Min		
C						
CHEMICAL PROPERTIES						
1	Resistance to Staining	IS - 13630 - 8	Glaze - Class 1,Min Unglaze - Class 2,Min	Glaze & Unglaze - Class 2,Min		
2	Resistance to Household Chemicals	IS - 13630 - 8	Glaze - Class AA,Min Unglaze -Required If agreed according to chemical resistance class indicated by manufacturer	Class AA		
3	Resistance to Acids & Alkalis	IS - 13630 - 8	Glaze & Unglaze -Required If agreed according to chemical resistance class indicated by manufacturer	Resistance		
Product Category		Body	Size	Thickness	Coverage (sq. M.)	No. of Tiles/Box
Fullbody		Fullbody	600X600mm	9mm	1.44	4PCS
Fullbody		Fullbody	600X600mm	16mm	0.72	2PCS

VARMORA Values given above are own valued, Which we tries to maintain, how ever test results may differ up to the limit prescribed under IS 15622 :2017 (GROUP B I a)
* Minimum 5 On matt tiles.

Note: Colour shown are as accurate as the limitations of the printing process will allow. Prospective customers are advised to inspect a sample of the tile before ordering. Our effort has been made to ensure the accuracy of the information given. However, the company reserve the right to change the specifications without prior notice. Sometime variations in shade or size being inherent to ceramic industry may occur. Before fixing, we advise you to follow the fixing instructions on the cartons (box) of the tiles. No responsibility will be accepted by the company once the tiles have been fixed.



VARMORA

TILES • BATHWARE

HEAD OFFICE

8/A National Highway, At. Dhuva, Tal. Wankaner, Morbi-363621, Gujarat, India

Tiles Contact:

Mob.: +91 98252 23068

E-mail: marketing@varmora.com

Bathware Contact:

Mob.: +91 90999 13129

E-mail: marketing@varmorasanitaryware.com

Mob.: +91 99139 23095

E-mail: customercare.faucets@varmora.com

Mob.: +91 90990 01734

E-mail: customercare.bathware@varmora.com

Mob.: +91 90990 01734

E-mail: customercare.sink@varmora.com

CORPORATE OFFICE

Varmora Granito Pvt. Ltd.
1004/5/6 South Tower, ONE42
O ffBopal-Ambli Road
Ahmedabad-380054, Gujarat,INDIA

REGIONAL OFFICE

A-54, 1st Floor, Elite Auto House
Mathuradas Vasanji Road, Andheri - Kurla Road
Andheri (East) Mumbai 400 093
Tel.: +91-22-4973 9179, Fax: +91-22-2838 9794
E-mail: mumbai@varmora.com

Tiles Customer Care:

1800 212 0053

Bathware Customer Care

1800 212 4525

Follow us:

