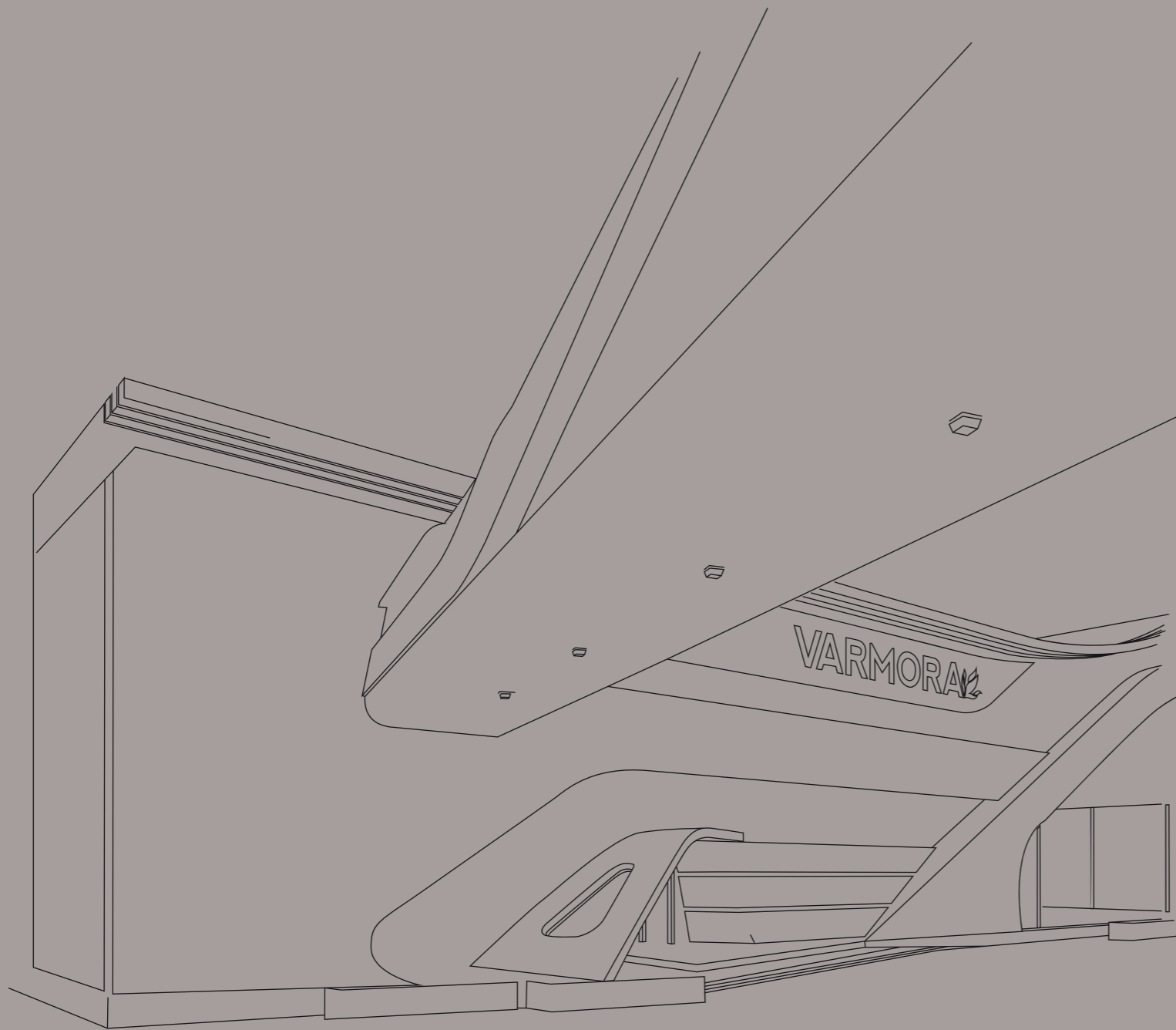




80x
80cm | DOUBLE CHARGE



ABOUT US

Varmora Granito Pvt. Ltd. is a flagship company of the Varmora Group and a leading manufacturer of high-quality ceramic tiles, bath and sanitary products, and other building materials. Established in 1994, Varmora Granito has grown to become one of the largest manufacturers in the industry, with in-house production capacity of 35 msm per annum. With a focus on innovation, sustainability, and customer satisfaction, Varmora Granito is committed to providing its customers with the best products and services worldwide. Varmora now boasts 317 exclusive brand outlets (EBOs) and 2,000+ multi-brand outlets (MBOs) in their network. Whether you're looking for stylish tiles, durable bath and sanitary products, or other building materials, Varmora Granito has you covered.

To know more about Varmora Granito visit www.varmora.com

80x
80cm



DOUBLE CHARGE COLLECTION

Discover our **Double Charge** vitrified tiles-elegance meets durability. These tiles are the ultimate choice for both indoor and outdoor spaces. With a range of stunning designs, they replicate the beauty of natural materials while boasting a glossy finish.

TECHNICAL FEATURES :



DIGITAL
PRINTING+



ECO FRIENDLY



ZERO
MAINTENANCE



ABRASION
RESISTANCE



LOW WATER
ABSORPTION



SUPER
GLOSSINESS



NANO
TECHNOLOGY



VARMORA
TILES • BATHWARE

MATRIX | Finish : Glossy



MATRIX BEIGE



MATRIX | Finish : Glossy



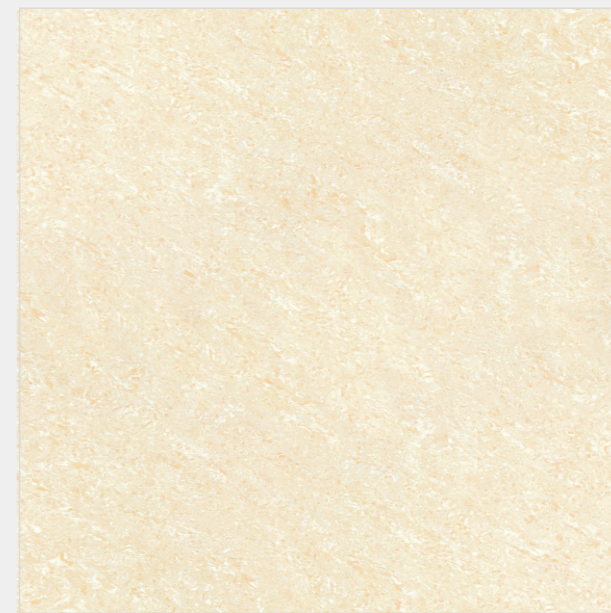
MATRIX CREMA





VARMORA
TILES • BATHWARE

MATRIX | Finish : Glossy



MATRIX GOLDEN



MATRIX | Finish : Glossy

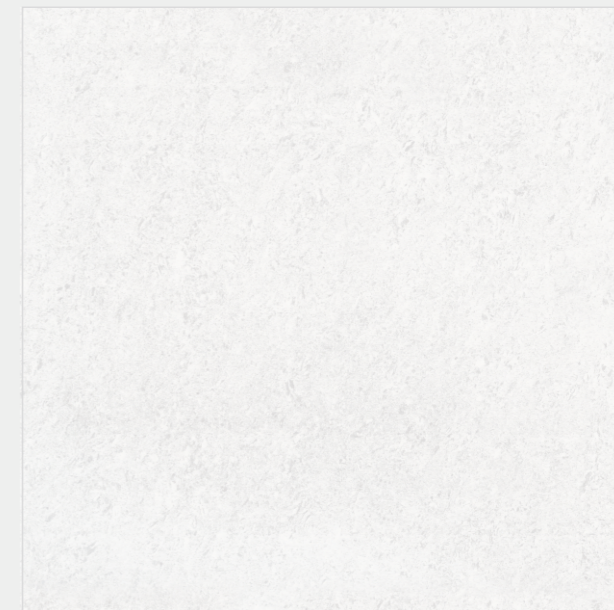


MATRIX PINK





MARVELOUS | Finish : Glossy

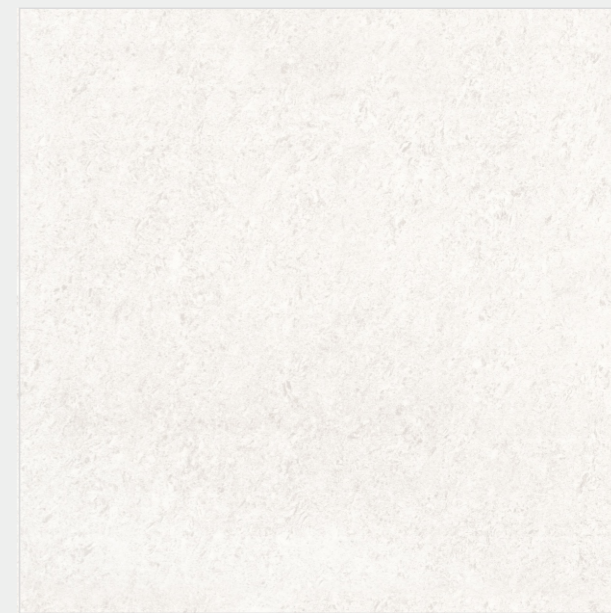


MARVEL WHITE



VARMORA
TILES • BATHWARE

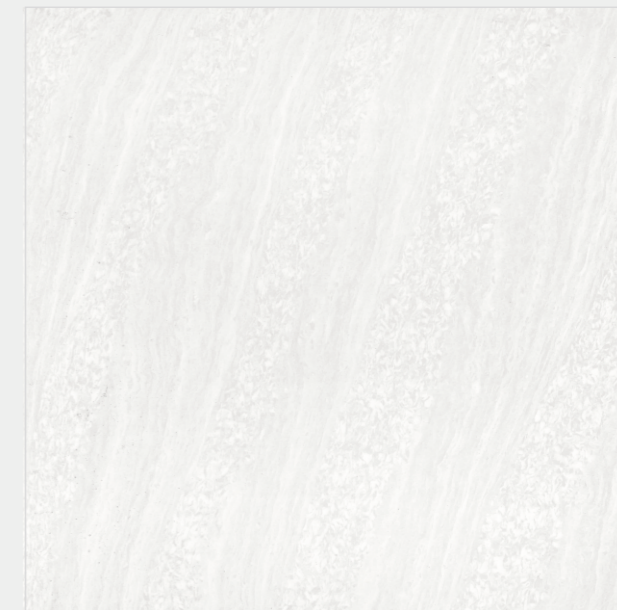
TROPICANA | Finish : Glossy



FEATHER WHITE



CIVIC | Finish : Glossy



DYNAMIC WHITE



CIVIC | Finish : Glossy



DYNAMIC CREMA



CIVIC | Finish : Glossy

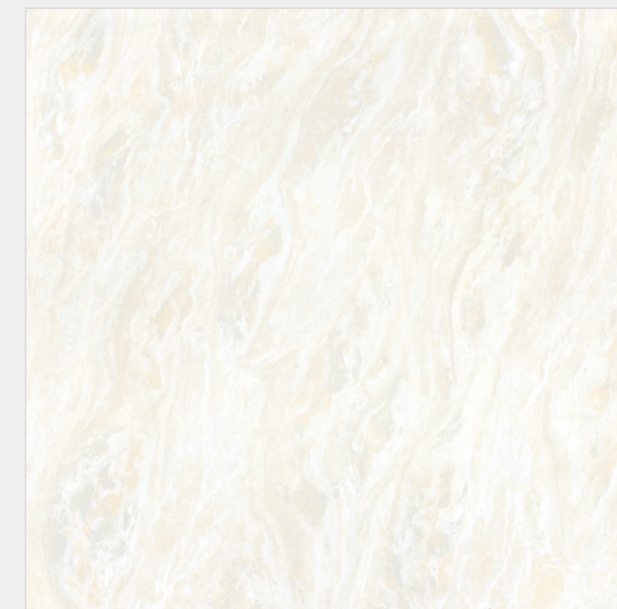


POLO WHITE



VARMORA
TILES • BATHWARE

CIVIC | Finish : Glossy



POLO CREMA



FUSION | Finish : Glossy



AVIO DOVE



FUSION | Finish : Glossy



AVIO CREMA



BLOSSOM | Finish : Glossy



BLOSSOM WHITE



Technical Specification

DOUBLE CHARGE

SR. NO.	CHARACTERISTIC	TEST METHOD	IS 15622 :2017 (GROUP B I a)	VARMORA VALUE
A				
DIMENSION & SURFACE QUALITY				
1	Deviation in Length & Width	IS - 13630 - 1	± 0.10%	± 0.10%
2	Deviation in Thickness	IS - 13630 - 1	± 5.00%	± 3.50%
3	Straightness of sides	IS - 13630 - 1	± 0.10%	± 0.10%
4	Rectangularity	IS - 13630 - 1	± 0.10%	± 0.10%
5	Surface Flatness	IS - 13630 - 1	± 0.50%	± 0.20%
6	Surface Quality	IS - 13630 - 1	Minimum 95 % of tiles shall be free from visible defects	95%
B				
PHYSICAL PROPERTIES				
1	Water Absorption	IS - 13630 - 2	≤0.08%,Avg.	0.06%,Avg.
2	Modulus of Rapture(N/mm ²)	IS - 13630 - 6	Avg. 35 N/mm ²	Avg. 38 N/mm ²
3	Breaking Strength (N)	IS - 13630 - 6	Thickness <7.5 mm = 700 N, Min Thickness ≥7.5 mm = 1300 N, Min	Thickness ≥7.5 mm = 1500 N
4	Moisture Expansion (mm/m)	IS - 13630 - 3	0.02 Max.	0.01 Max.
5	Scratch Hardness of Surface (Mohs' Scale)	IS - 13630 - 13	5, Min	5, Min*
6	Resistance of Surface Abrasion (Glazed tiles)	IS - 13630 - 11	Class II, Min.	Class IV
7	Co-efficient of linear thermal expansion	IS - 13630 - 4	6x10 ⁻⁶ , Max	6x10 ⁻⁶ , Max
8	Thermal Shock Resistance	IS - 13630 - 5	10 Cycles, Min	10 Cycles, Pass
9	Crazing Resistance	IS - 13630 - 9	4 Cycles at 7.5 Bar ,Min	4 Cycles, Pass
10	Impact Resistance- Coefficient of Restitution	IS - 13630 - 14	0.55, Min	0.55, Min
11	Coefficient of Friction	-	Manufacturer Norms	Manufacturer Norms
12	Frost Resistance	IS - 13630 - 10	Manufacturer Norms	No Damage
13	Bulk Density (g/cc)	IS - 13630 - 2	2.2, Min	2.3, Min
C				
CHEMICAL PROPERTIES				
1	Resistance to Staining	IS - 13630 - 7	Class 2, Min	Class 2, Min
2	Resistance to Household Chemicals	IS - 13630 - 8	Class AA,Min	Class AA
3	Resistance to Acids & Alkalis	IS - 13630 - 8	Required If agreed according to chemical resistance class indicated by manufacturer	Resistance

VARMORA Values given above are own valued, Which we tries to maintain, how ever test results may differ up to the limit prescribed under IS 15622 :2017 (GROUP B I a)
* Minimum 5 On matt tiles.

Note: Colour shown are as accurate as the limitations of the printing process will allow. Prospective customers are advised to inspect a sample of the tile before ordering. Our effort has been made to ensure the accuracy of the information given. However, the company reserve the right to change the specifications without prior notice. Sometime variations in shade or size being inherent to ceramic industry may occur. Before fixing, we advise you to follow the fixing instructions on the cartons (box) of the tiles. No responsibility will be accepted by the company once the tiles have been fixed.



VARMORA

TILES • BATHWARE

HEAD OFFICE

8/A National Highway, At. Dhuva, Tal. Wankaner, Morbi-363621, Gujarat, India

Tiles Contact:

Mob.: +91 98252 23068

E-mail: marketing@varmora.com

Bathware Contact:

Mob.: +91 90999 13129

E-mail: marketing@varmorasanitaryware.com

Mob.: +91 99139 23095

E-mail: customercare.faucets@varmora.com

Mob.: +91 90990 01734

E-mail: customercare.bathware@varmora.com

Mob.: +91 90990 01734

E-mail: customercare.sink@varmora.com

CORPORATE OFFICE

Varmora Granito Pvt. Ltd.
1004/5/6 South Tower, ONE42
Off Bopal-Ambli Road
Ahmedabad-380054, Gujarat,INDIA

REGIONAL OFFICE

A-54, 1st Floor, Elite Auto House
Mathuradas Vasanji Road, Andheri - Kurla Road
Andheri (East) Mumbai 400 093
Tel.: +91-22-4973 9179, Fax: +91-22-2838 9794
E-mail: mumbai@varmora.com

Tiles Customer Care:

1800 212 0053

Bathware Customer Care

1800 212 4525

Follow us:

