

DISCOVER A WORLD  
OF POSSIBILITIES

new  
style

40x  
120cm



## ABOUT US

Varmora Granito Pvt. Ltd. is a flagship company of the Varmora Group and a leading manufacturer of high-quality ceramic tiles, bath and sanitary products, and other building materials. Established in 1994, Varmora Granito has grown to become one of the largest manufacturers in the industry, with in-house production capacity of 35 MSM per annum. With a focus on innovation, sustainability, and customer satisfaction, Varmora Granito is committed to providing its customers with the best products and services worldwide. Varmora now boasts 317 exclusive brand outlets (EBOs) and 2,000+ multi-brand outlets (MBOs) in their network. Whether you're looking for stylish tiles, durable bath and sanitary products, or other building materials, Varmora Granito has you covered.

To know more about Varmora Granito visit [www.varmora.com](http://www.varmora.com)





## ABOUT THE TECHNOLOGY

Discover the remarkable combination of traditional craftsmanship with the latest technology. We at *Varmora* strive for advancement in the ceramic world by infusing modern techniques and technology to craft impeccable and unique textures, designs, and layouts. The meticulously crafted tiles undergo a superior transition with the help of technology, showcasing versatile effects. Above all, vivid techniques are opted that add high aesthetic value to the tiles and through advanced machinery, the tiles are molded and given a definite shape to blend with the decor style of spaces seamlessly.

## FORMAT

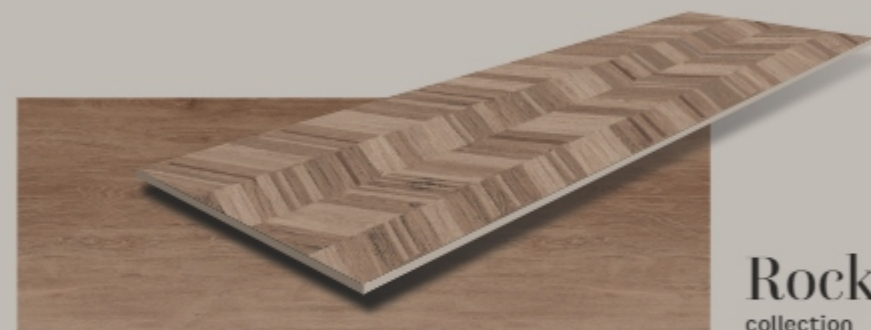
UNFOLD  
DISTINCT  
FORMAT  
WITH  
DISTINCT  
FEATURES



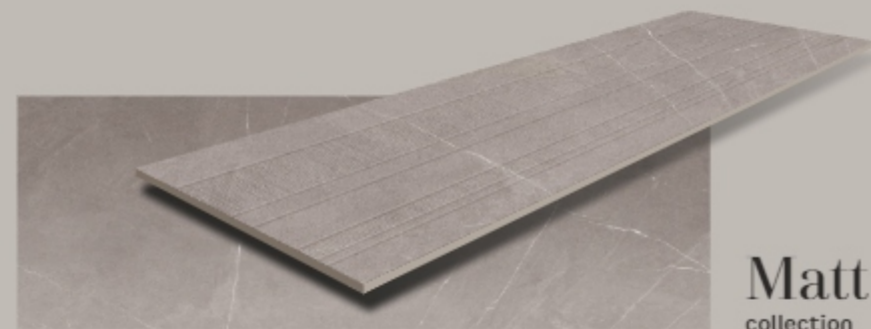
40x  
120cm  
9mm THICKNESS

Exceptional tiles  
with extravagance  
make a bold  
statement in  
versatile spaces.

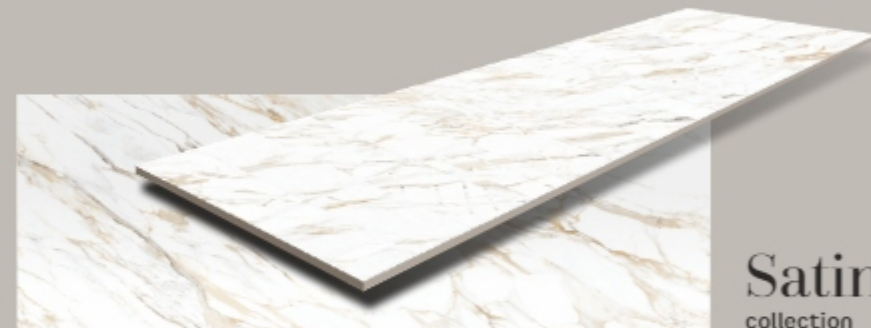
## INDEX



**Rocker**  
collection



**Matt**  
collection



**Satin**  
collection

DISCOVER CUTTING-EDGE  
COLLECTIONS THAT INSPIRES

## TECHNICAL FEATURES

Discover infinite possibilities with class-apart features of vitrified tiles, blending effortlessly with the decor style of versatile spaces.



EASY CLEANING AND CARE



THERMAL SHOCK RESISTANCE



HEAT-RESISTANT



RESISTANCE TO STAINS



LIGHT-FAST COLOURS



RESISTANCE TO HOUSEHOLD CHEMICALS



SCRATCH RESISTANCE



DOES NOT ABSORB LIQUIDS



IMPACT RESISTANCE



ANTI-SKID



DIGITAL PRINTING



ECO FRIENDLY



ZERO MAINTENANCE



ABRASION RESISTANCE



RANDOM

## NOTABLE FEATURES



### HIGH DEPTH PUNCH

Add deftness to your space with high depth excellence through noteworthy punch style.



### MINIMAL & CLEAN DESIGNS

Streamline your space with minimally aesthetic and uncluttered designs of tiles.



### SUITABLE FOR OUTDOOR AREA

Elevate your outdoors with the extraordinary tile format with sleek and modern look.



BEAUTY  
OF  
TEXTURE

# Rocker

collection

Crafted with meticulous artistry, the Rocker Collection by Varmora is a masterpiece. The tiles are revered for their unmatched aesthetics, rare textures and dazzling allure that complement every corner of spaces.



**INNO SLATE ROCKER** | Finish: Rocker



**AMANTE GREY**



**STRIPO AMANTE GREY**

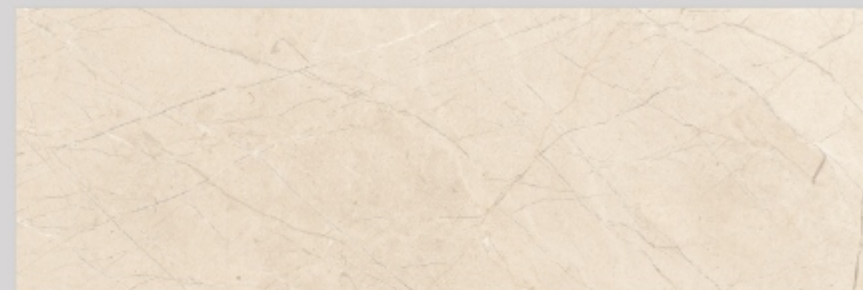


**ROCKER** COLLECTION

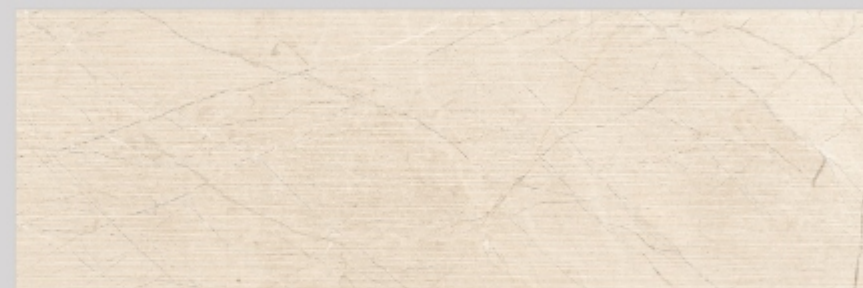
\* Touch the **QR** to unlock 360° view.



INNO SLATE ROCKER | Finish: Rocker



AMANTE IVORY



STRIPO AMANTE IVORY



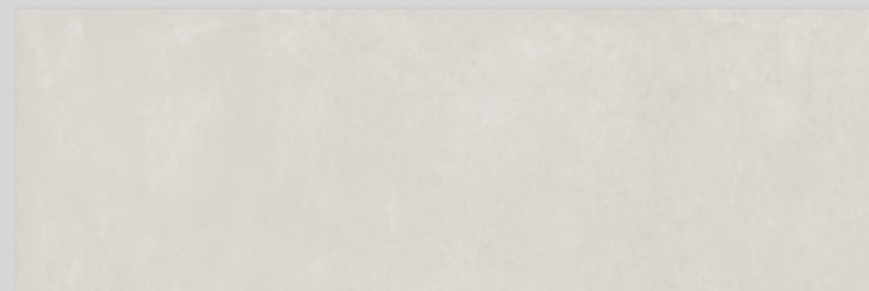
**ROCKER** COLLECTION

\* Touch the QR to unlock 360° view.

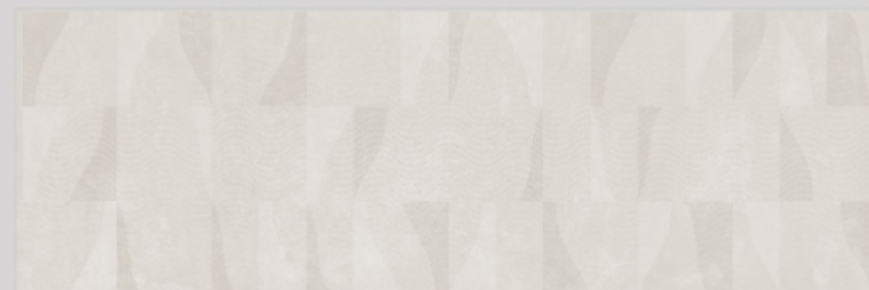




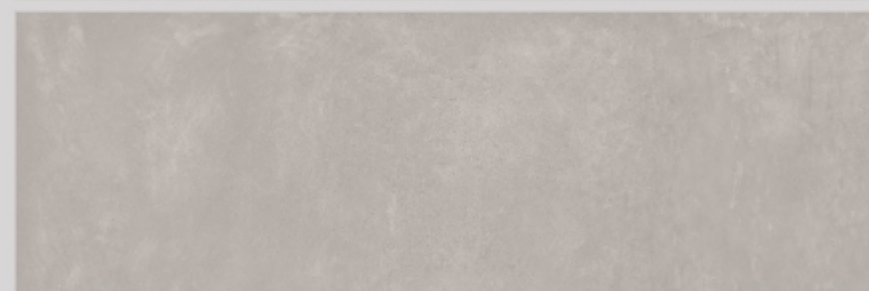
INNO SLATE ROCKER | Finish: Rocker



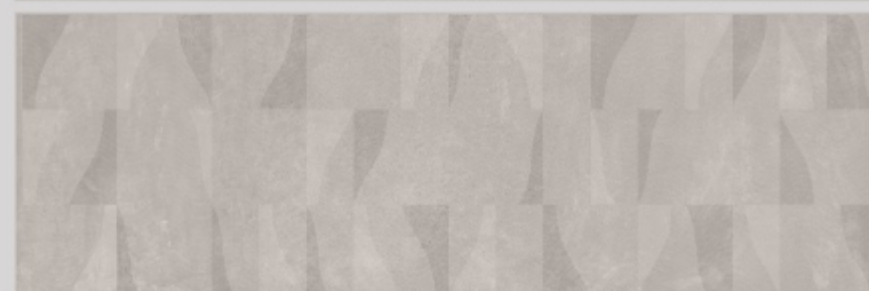
COSMA BIANCO



SWELL COSMA BIANCO



COSMA CEMENTO



SWELL COSMA CEMENTO

\* Touch the QR to unlock 360° view.



ROCKER COLLECTION



INNO SLATE ROCKER | Finish: Rocker



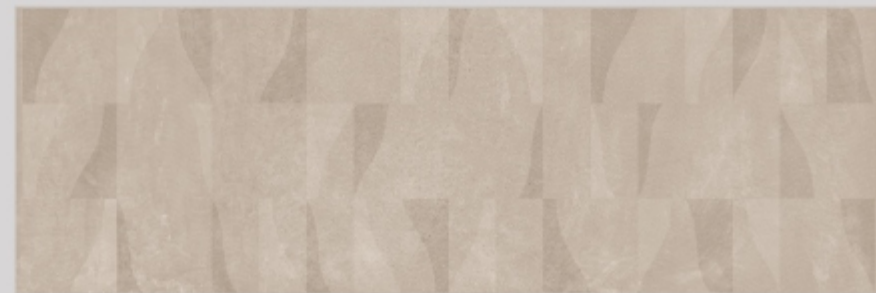
COSMA IVORY



SWELL COSMA IVORY



COSMA NATURAL



SWELL COSMA NATURAL

\* Touch the QR to unlock 360° view.



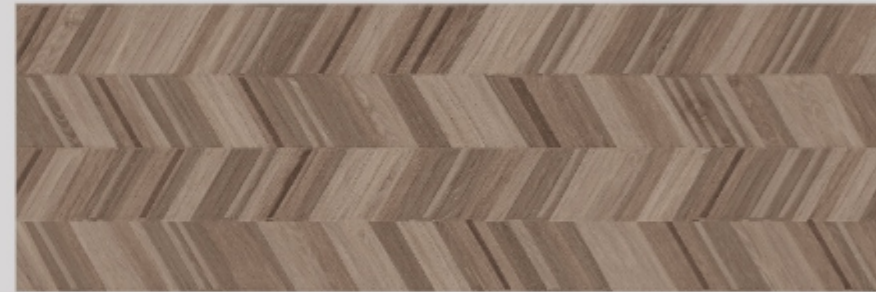
ROCKER COLLECTION



INNO SLATE ROCKER | Finish: Rocker



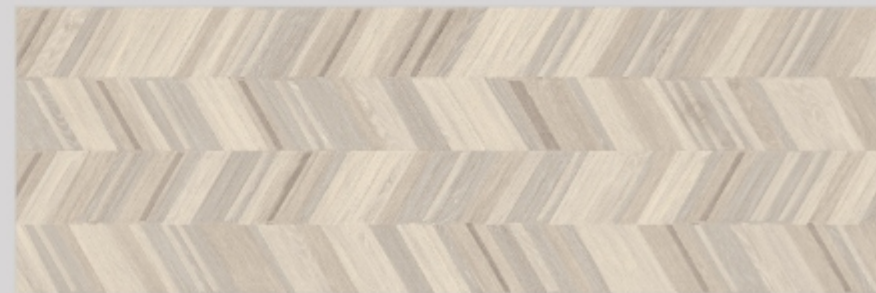
OAK WOOD BROWN



GROOVER OAK WOOD BROWN



OAK WOOD IVORY



GROOVER OAK WOOD IVORY

ROCKER COLLECTION

\* Touch the QR to unlock 360° view.



INNO SLATE ROCKER | Finish: Rocker



OAK WOOD NATURAL



GROOVER OAK WOOD NATURAL



**ROCKER** COLLECTION

\* Touch the QR to unlock 360° view.



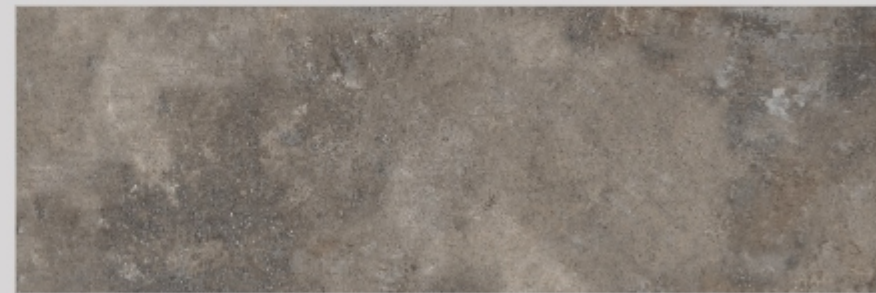
INNO SLATE ROCKER | Finish: Rocker



OXIDO CEMENTO



ORIENT OXIDO CEMENTO



OXIDO DOVE



ORIENT OXIDO DOVE

\* Touch the QR to unlock 360° view.



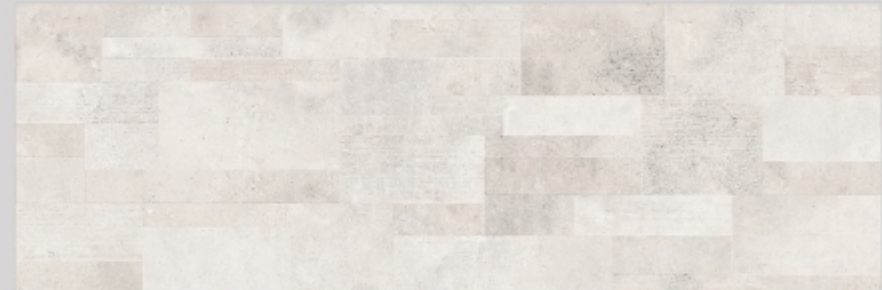
ROCKER COLLECTION



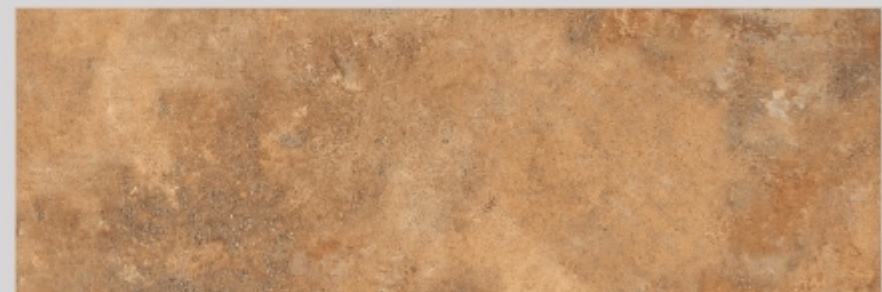
INNO SLATE ROCKER | Finish: Rocker



OXIDO PEARL



ORIENT OXIDO PEARL



OXIDO RUSTY



ORIENT OXIDO RUSTY

\* Touch the QR to unlock 360° view.



ROCKER COLLECTION



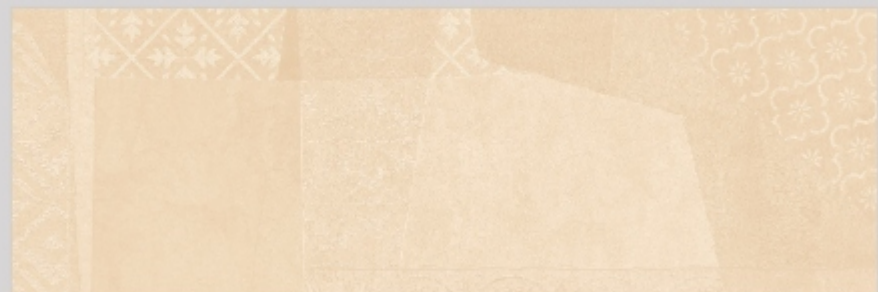
INNO SLATE ROCKER | Finish: Rocker



REGAL COPPER



REGAL GREY



REGAL IVORY



REGAL TAUPE

\* Touch the QR to unlock 360° view.



ROCKER COLLECTION



DEPTH  
OF  
INTENSITY

# Matt

collection

Elevate your space with the tiles from the Matt Collection by Varmora, known for their exceptional properties and understated beauty that lasts. The surfaces have a touch of contemporary elegance and extravagant style.





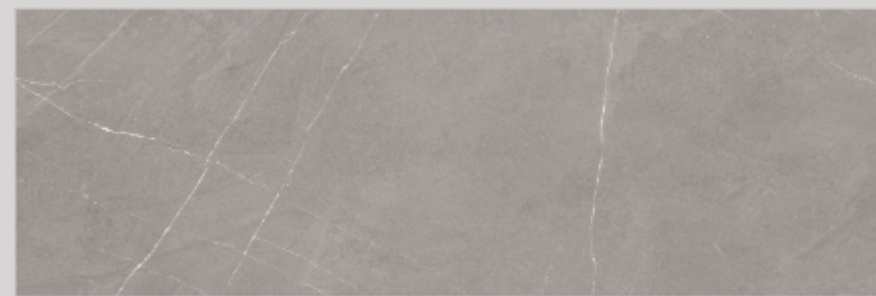
INNO SLATE MATT | Finish: Matt



ARENA BIANCO



GARNET ARENA BIANCO



ARENA GREY



GARNET ARENA GREY

\* Touch the QR to unlock 360° view.



MATT COLLECTION



INNO SLATE MATT | Finish: Matt



ARENA NATURAL



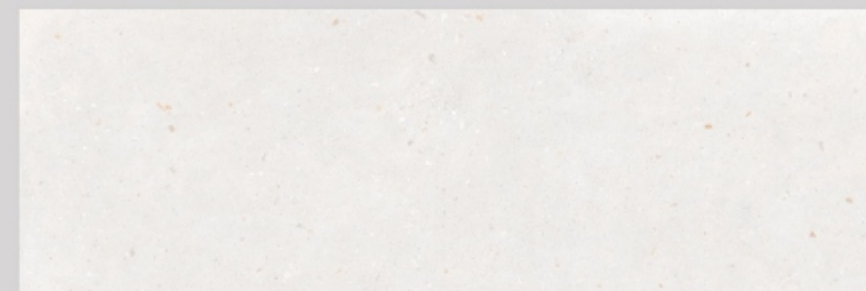
GARNET ARENA NATURAL



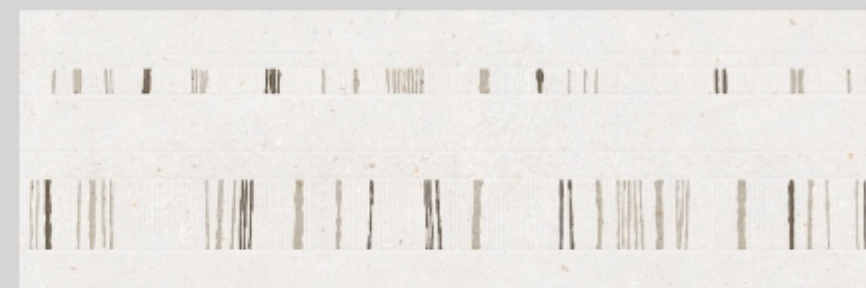
MATT COLLECTION



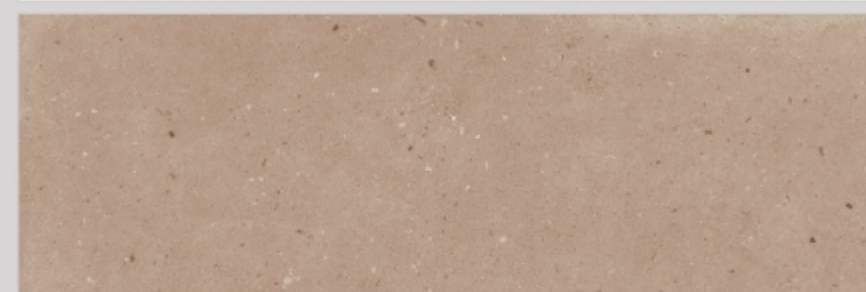
INNO SLATE MATT | Finish: Matt



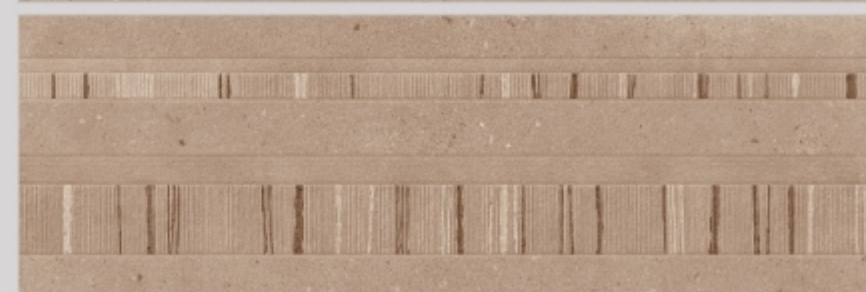
ELITE BIANCO



GARNET ELITE BIANCO



ELITE BROWN



GARNET ELITE BROWN

\* Touch the QR to unlock 360° view.



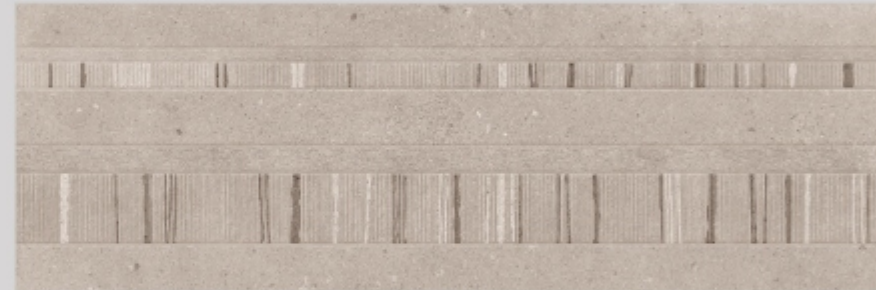
MATT COLLECTION



INNO SLATE MATT | Finish: Matt



ELITE GREY



GARNET ELITE GREY



ELITE IVORY



GARNET ELITE IVORY

\* Touch the QR to unlock 360° view.



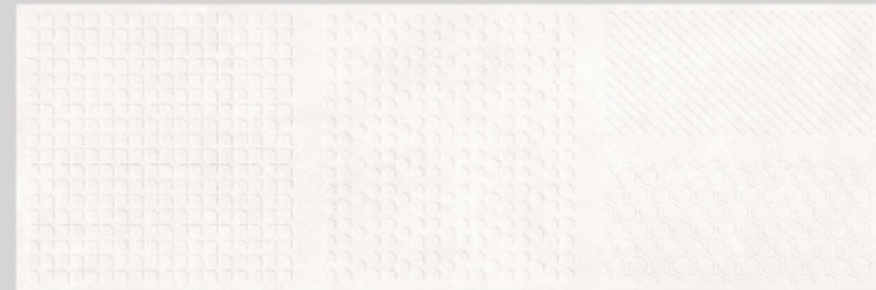
MATT COLLECTION



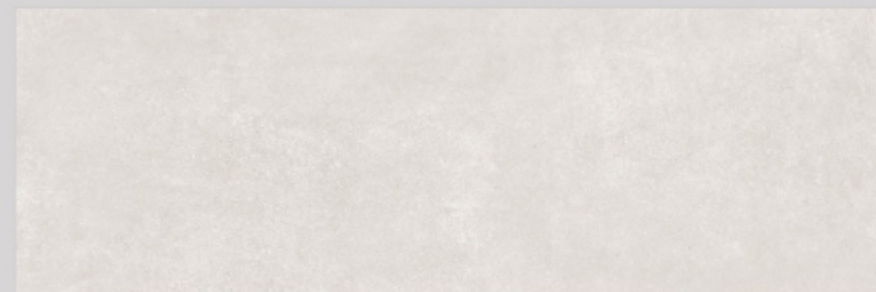
INNO SLATE MATT | Finish: Matt



NEXUS BIANCO



CLOWN NEXUS BIANCO



NEXUS CEMENTO



CLOWN NEXUS CEMENTO

MATT COLLECTION

\* Touch the QR to unlock 360° view.



MATT COLLECTION

INNO SLATE MATT | Finish: Matt



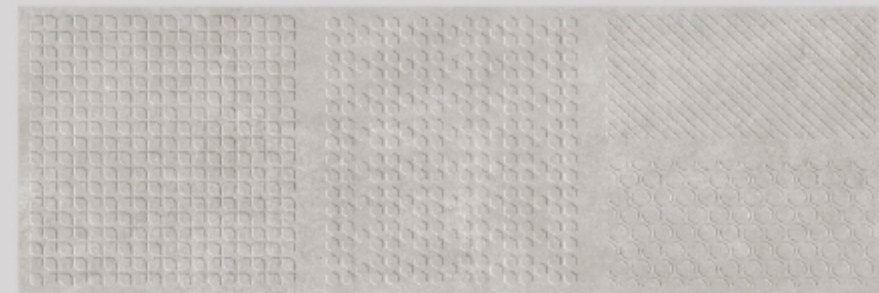
NEXUS NATURAL



CLOWN NEXUS NATURAL



NEXUS STEEL

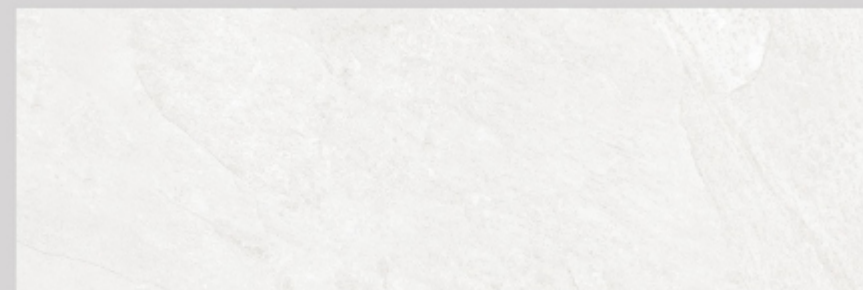


CLOWN NEXUS STEEL

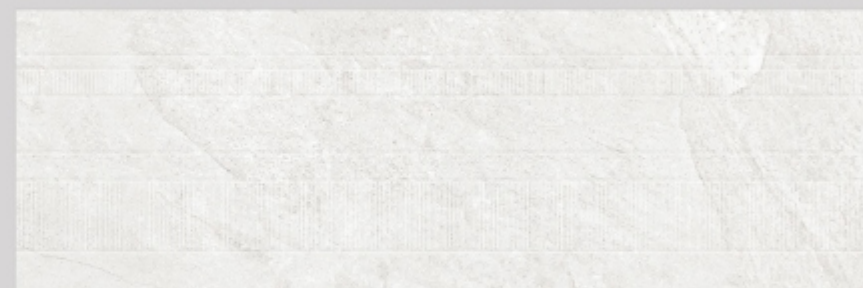
\* Touch the QR to unlock 360° view.



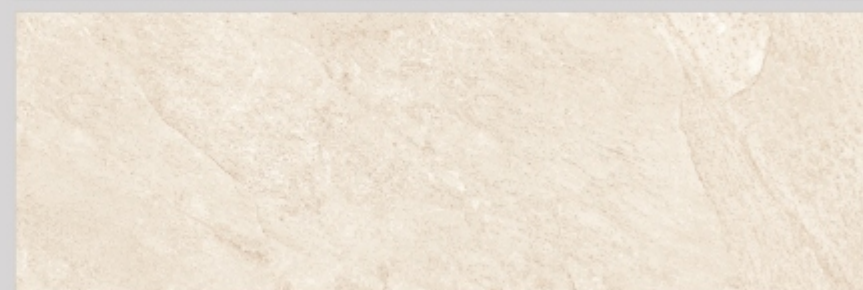
INNO SLATE MATT | Finish: Matt



PIEDRA BIANCO



GARNET PIEDRA BIANCO



PIEDRA CREMA



GARNET PIEDRA CREMA



**MATT** COLLECTION

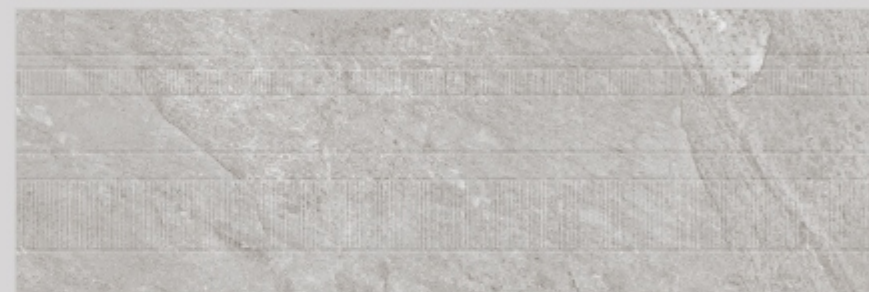
\* Touch the QR to unlock 360° view.



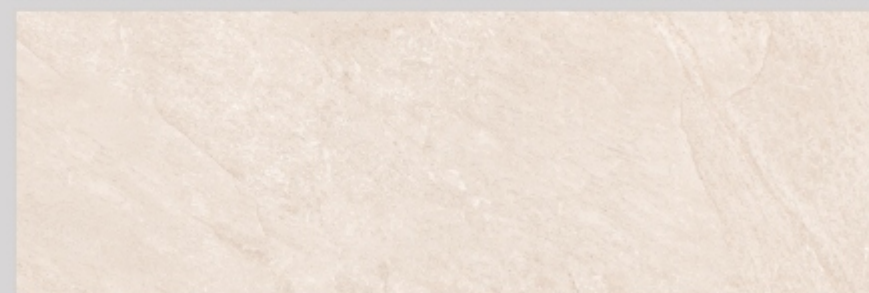
**INNO SLATE MATT** | Finish: Matt



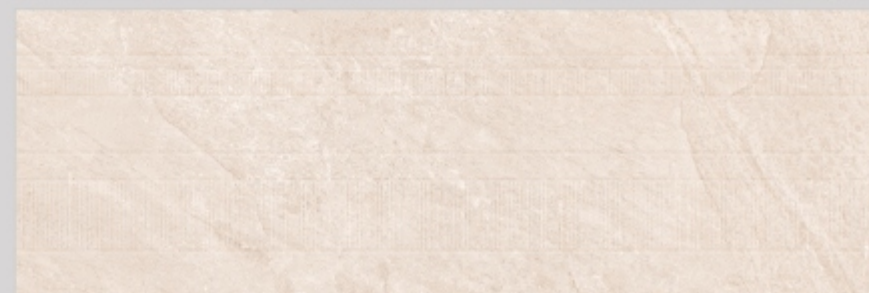
PIEDRA GREY



GARNET PIEDRA GREY



PIEDRA PEACH



GARNET PIEDRA PEACH

\* Touch the QR to unlock 360° view.



**MATT** COLLECTION





MATT COLLECTION

INNO SLATE MATT | Finish: Matt



PLANOS ACOM



JASPER PLANOS ACOM



PLANOS COPPER

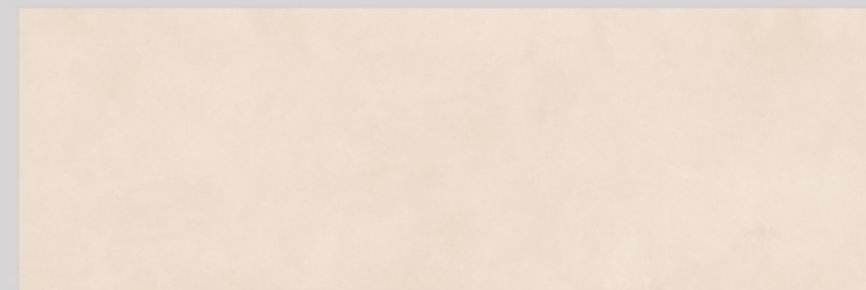


JASPER PLANOS COPPER

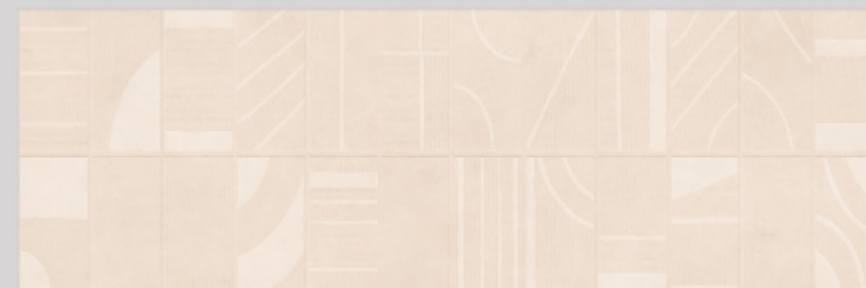
\* Touch the QR to unlock 360° view.



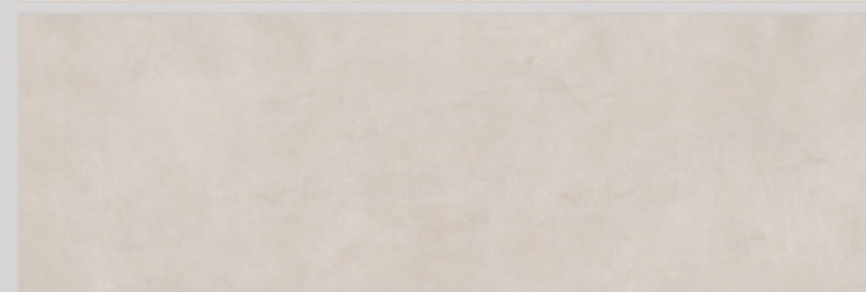
INNO SLATE MATT | Finish: Matt



PLANOS PASTEL



JASPER PLANOS PASTEL



PLANOS STEEL



JASPER PLANOS STEEL

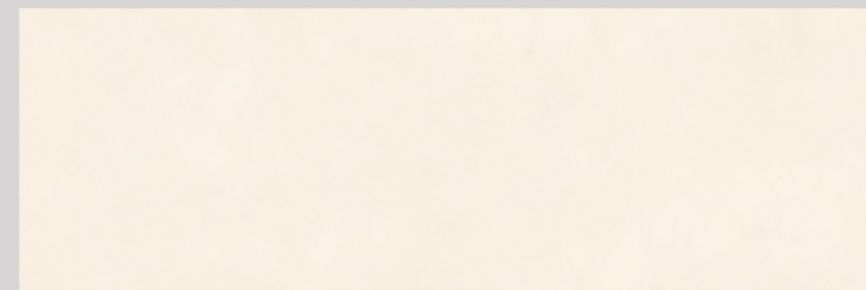
\* Touch the QR to unlock 360° view.



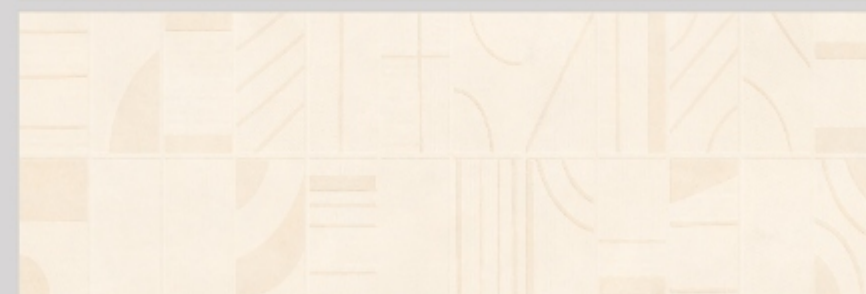
MATT COLLECTION



INNO SLATE MATT | Finish: Matt



PLANOS TUSK



JASPER PLANOS TUSK



**MATT** COLLECTION



INNO SLATE MATT | Finish: Matt



UNICO BEIGE



GROOVER UNICO BEIGE

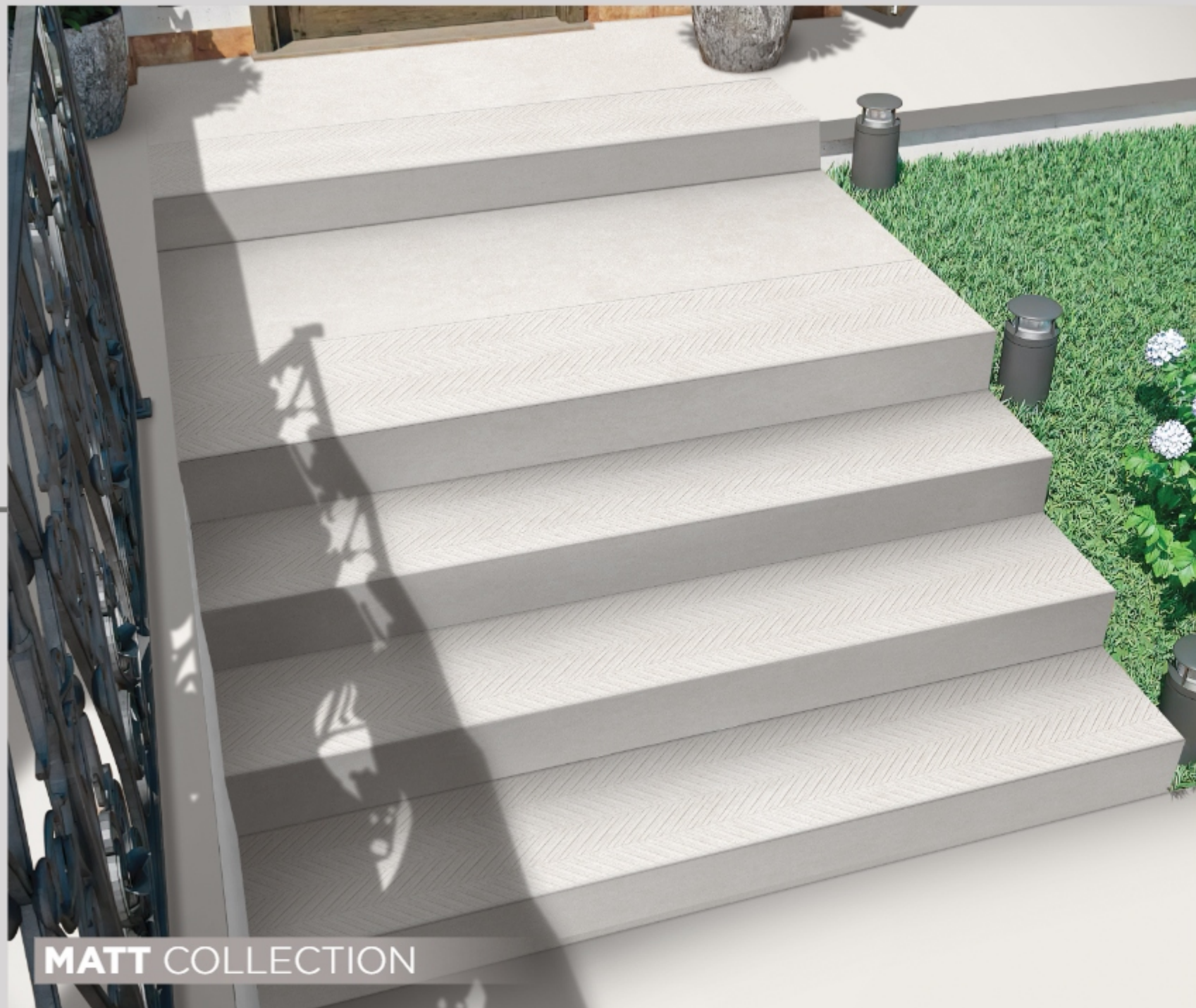


UNICO GREY



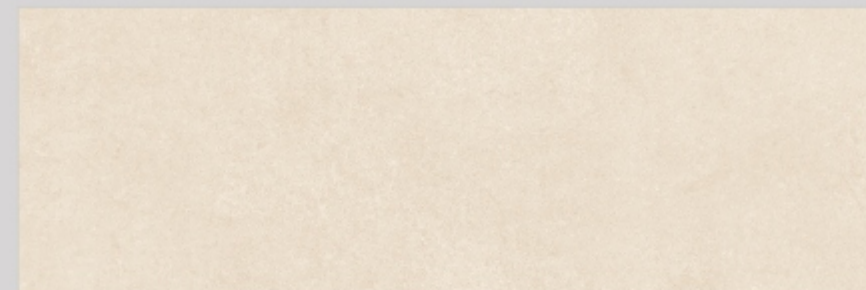
GROOVER UNICO GREY

MATT COLLECTION

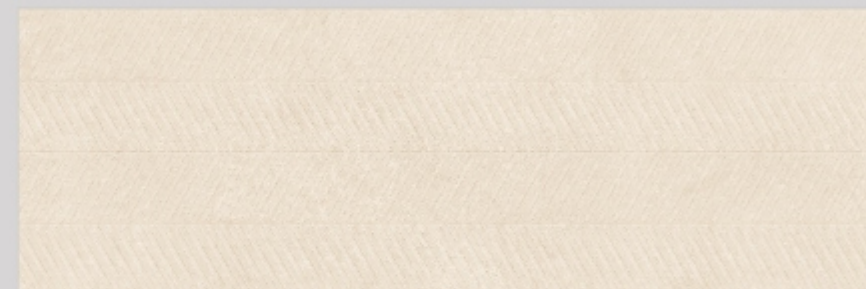


**MATT** COLLECTION

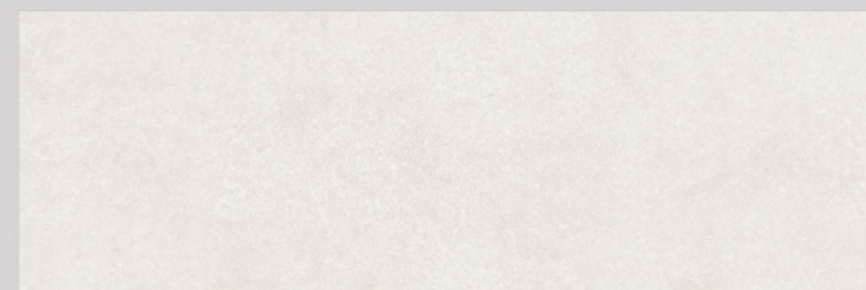
INNO SLATE MATT | Finish: Matt



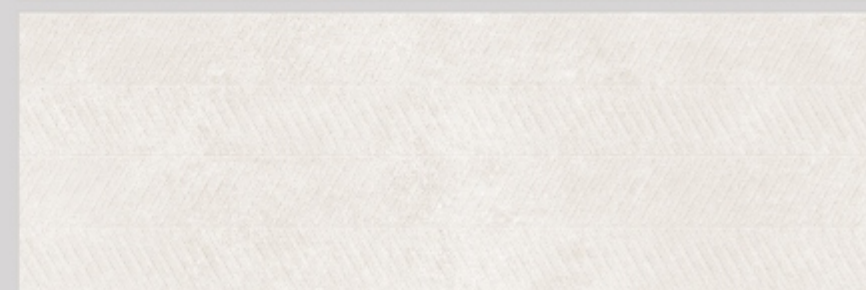
UNICO IVORY



GROOVER UNICO IVORY



UNICO PEARL



GROOVER UNICO PEARL

\* Touch the QR to unlock 360° view.



INNO SLATE MATT | Finish: Matt



UNICO STEEL



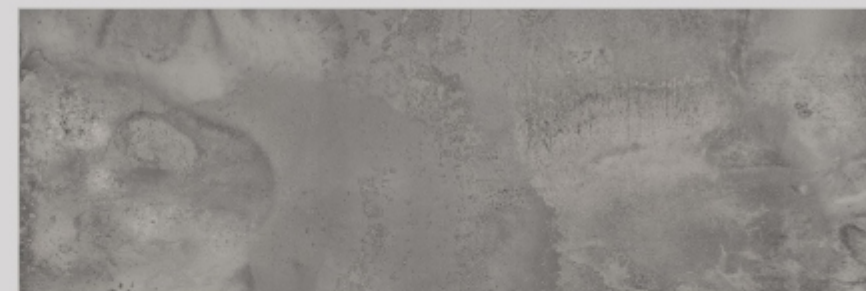
GROOVER UNICO STEEL



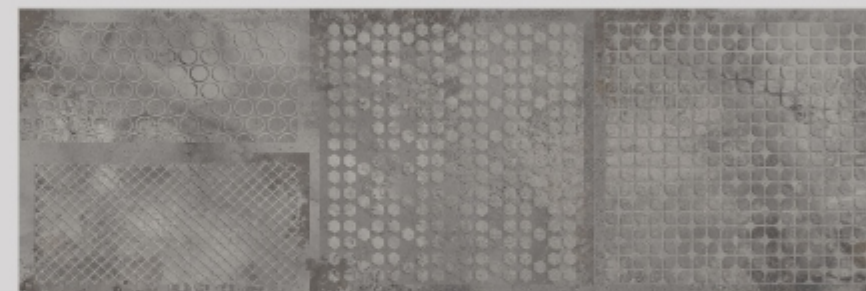
MATT COLLECTION



INNO SLATE MATT | Finish: Matt



LETIGRES DOVE



CLOWN LETIGRES DOVE



**MATT** COLLECTION

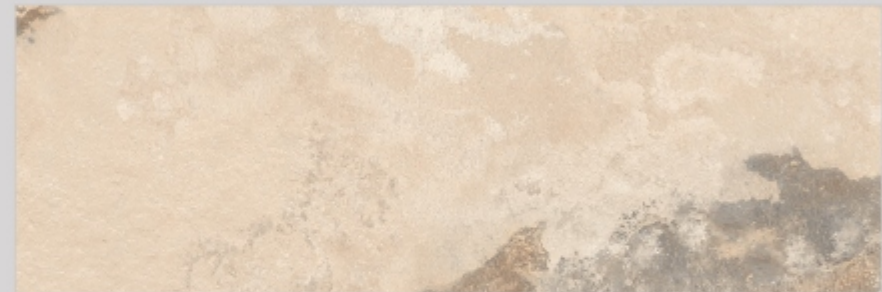
\* Touch the QR to unlock 360° view.



INNO SLATE MATT | Finish: Matt



RUSTICO GREY



RUSTICO IVORY



MATT COLLECTION





**TOUCH  
OF  
ELEGANCE**

# Satin

collection

The Satin Collection by Varmora is a culmination of elegant concept and craftsmanship. The collection features tiles with a feathery touch and reflective sheen that upkeep the timeless appeal of your space.



INNO SLATE SATIN | Finish: Matt



CALCUTTA LIVO



SWELL CALCUTTA LIVO

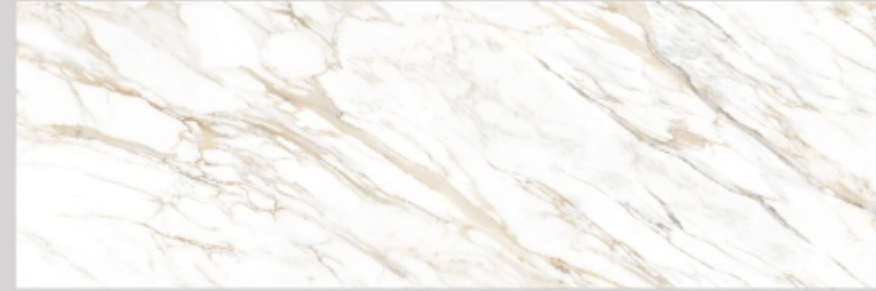


SATIN COLLECTION

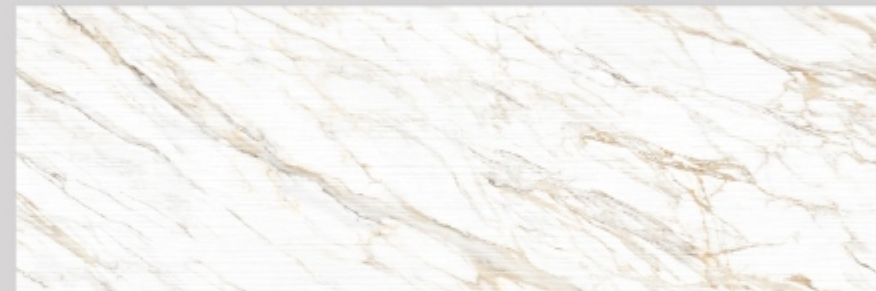


SATIN COLLECTION

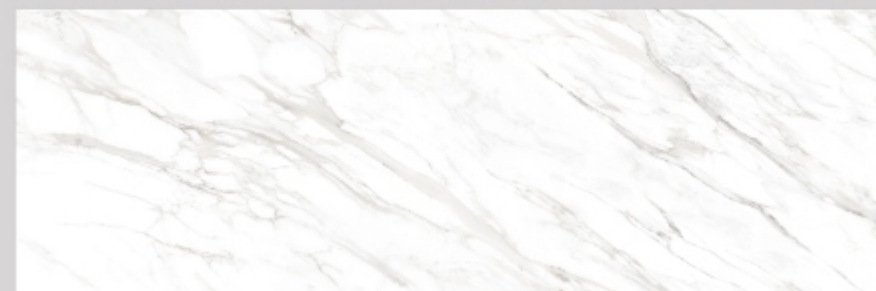
INNO SLATE SATIN | Finish: Matt



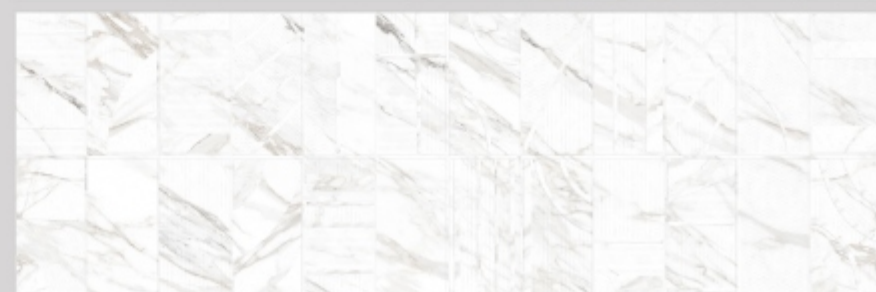
STATUARIO NATURAL



STRIPO STATUARIO NATURAL



STATUARIO ROMANO



JASPER STATUARIO ROMANO

\* Touch the QR to unlock 360° view.

# Technical Specification

GVT (Normal Vitrified Body & Color Vitrified Body)

Sr. No.	Characteristic	Test Method	IS 15622:2017 (GROUP B I a)	VARMORA VALUE	
<b>A</b>					
<b>DIMENSION &amp; SURFACE QUALITY</b>					
1	Deviation in Length & Width	IS - 13630 - 1	± 0.10%	± 0.10%	
2	Deviation in Thickness	IS - 13630 - 1	± 5.00%	± 3.50%	
3	Straightness of sides	IS - 13630 - 1	± 0.10%	± 0.10%	
4	Rectangularity	IS - 13630 - 1	± 0.10%	± 0.10%	
5	Surface Flatness	IS - 13630 - 1	± 0.50%	± 0.20%	
6	Surface Quality	IS - 13630 - 1	Minimum 95 % of tiles shall be free from visible defects	95%	
<b>B</b>					
<b>PHYSICAL PROPERTIES</b>					
1	Water Absorption	IS - 13630 - 2	≤0.08%,Avg.	0.06%,Avg.	
2	Modulus of Rapture(N/mm <sup>2</sup> )	IS - 13630 - 6	Avg. 35 N/mm <sup>2</sup>	Avg. 38 N/mm <sup>2</sup>	
3	Breaking Strength (N)	IS - 13630 - 6	Thickness <7.5 mm – 700 N, Min Thickness ≥7.5 mm – 1300 N, Min	Thickness >7.5 mm – 1500 N	
4	Moisture Expansion (mm/m)	IS - 13630 - 3	0.02 Max.	0.01 Max.	
5	Scratch Hardness of Surface (Mohs' Scale)	IS - 13630 - 13	5, Min	5, Min*	
6	Resistance of Surface Abrasion (Glazed tiles)	IS - 13630 - 11	Class II, Min.	Class IV	
7	Co-efficient of linear thermal expansion	IS - 13630 - 4	6x10 <sup>-6</sup> , Max	6x10 <sup>-6</sup> , Max	
8	Thermal Shock Resistance	IS - 13630 - 5	10 Cycles, Min	10 Cycles, Pass	
9	Crazing Resistance	IS - 13630 - 9	4 Cycles at 7.5 Bar ,Min	4 Cycles, Pass	
10	Impact Resistance-Coefficient of Restitution	IS - 13630 - 14	0.55, Min	0.55, Min	
11	Coefficient of Friction	-	Manufacturer Norms	Manufacturer Norms	
12	Frost Resistance	IS - 13630 - 10	Manufacturer Norms	No Damage	
13	Bulk Density (g/cc)	IS - 13630 - 2	2.2, Min	2.3, Min	
<b>C</b>					
<b>CHEMICAL PROPERTIES</b>					
1	Resistance to Staining	IS - 13630 - 8	Class 1, Min	Class 1, Min	
2	Resistance to Household Chemicals	IS - 13630 - 8	Class AA,Min	Class AA	
3	Resistance to Acids & Alkalis	IS - 13630 - 8	Required If agreed according to chemical resistance class indicated by manufacturer	Resistance	
<b>Product Category</b>		<b>Body</b>	<b>Size</b>	<b>Coverage (sq. M.)</b>	<b>No. of Tiles/Box</b>
GVT		GVT	400X1200	1.44	3 PCS

VARMORA Values given above are own valued, Which we tries to maintain, how ever test results may differ up to the limit prescribed under IS 15622:2017 (GROUP B I a)  
\* Minimum 5 On matt tiles.

Note: Colour shown are as accurate as the limitations of the printing process will allow. Prospective customers are advised to inspect a sample of the tile before ordering. Our effort has been made to ensure the accuracy of the information given. However, the company reserves the right to change the specifications without prior notice. Sometimes variations in shade or size being inherent to ceramic, industry may occur. Before fixing, we advise you to follow the fixing instructions on the cartons (back) of the tiles. No responsibility will be accepted by the company once the tiles have been fixed.



**VARMORA**  
TILES • BATHWARE

## HEAD OFFICE

8/A National Highway, At. Dhuva, Tal. Wankaner, Morbi-363621, Gujarat, India

## Tiles Contact:

Mob.: +91 98252 23068

E-mail: marketing@varmora.com

## Bathware Contact:

Mob.: +91 90999 13129

E-mail: marketing@varmorasanitaryware.com

## Mob.: +91 99139 23095

E-mail: customercare.faucets@varmora.com

## Mob.: +91 90990 01734

E-mail: customercare.bathware@varmora.com

## Mob.: +91 90990 01734

E-mail: customercare.sink@varmora.com

## CORPORATE OFFICE

Varmora Granito Pvt. Ltd.  
1004/5/6 South Tower, ONE42  
Off Bopal-Ambli Road  
Ahmedabad-380054, Gujarat,INDIA

## REGIONAL OFFICE

A-54, 1st Floor, Elite Auto House  
Mathuradas Vasanji Road, Andheri - Kurla Road  
Andheri (East) Mumbai 400 093  
Tel.: +91-22-4973 9179, Fax: +91-22-2838 9794  
E-mail: mumbai@varmora.com

Tiles Customer Care:

**1800 212 0053**

Bathware Customer Care

**1800 212 4525**

Follow us:

