



30x
60cm | NATURA COLLECTION



ABOUT US

Varmora Granito Pvt. Ltd. is a flagship company of the Varmora Group and a leading manufacturer of high-quality ceramic tiles, bath and sanitary products, and other building materials. Established in 1994, Varmora Granito has grown to become one of the largest manufacturers in the industry, with in-house production capacity of 35 msm per annum. With a focus on innovation, sustainability, and customer satisfaction, Varmora Granito is committed to providing its customers with the best products and services worldwide. Varmora now boasts 317 exclusive brand outlets (EBOs) and 2,000+ multi-brand outlets (MBOs) in their network. Whether you're looking for stylish tiles, durable bath and sanitary products, or other building materials, Varmora Granito has you covered.

To know more about Varmora Granito visit www.varmorā.com.



TECHNICAL FEATURES

Discover infinite possibilities with class-apart features of vitrified tiles, blending effortlessly with the decor style of versatile spaces.



SCRATCH
RESISTANCE



DOES NOT
ABSORB LIQUIDS



EASY CLEANING
AND CARE



ANTI-SKID



DIGITAL
PRINTING



ECO
FRIENDLY



ZERO
MAINTENANCE



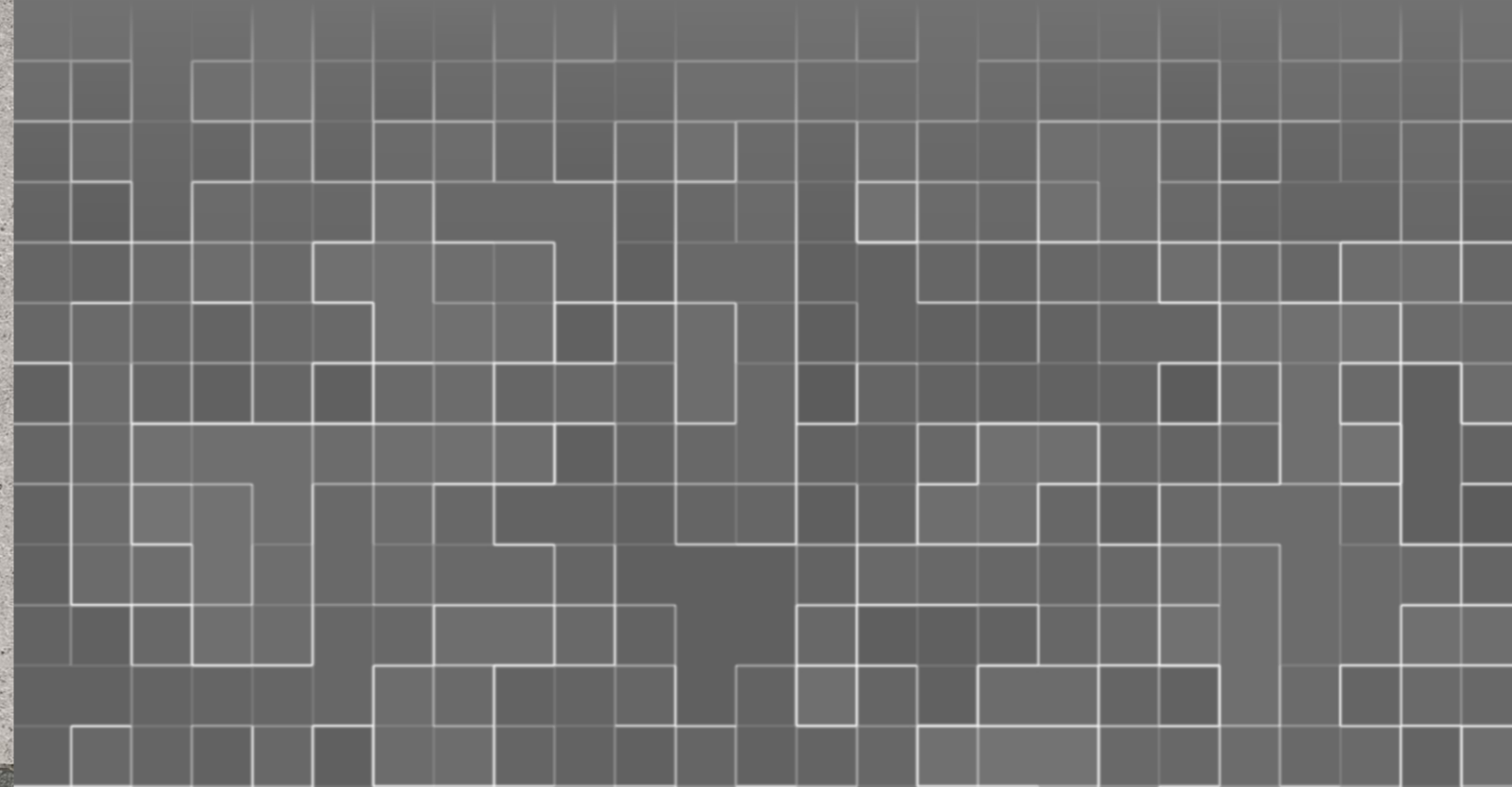
ABRASION
RESISTANCE



RANDOM

NATURA COLLECTION:-




Elevate your outdoor space with Rustic Matt Outdoor Tiles, inspired by natural stone's beauty. These durable, low-maintenance tiles infuse your outdoors with earthy charm. Explore versatile designs to create your ideal outdoor haven.



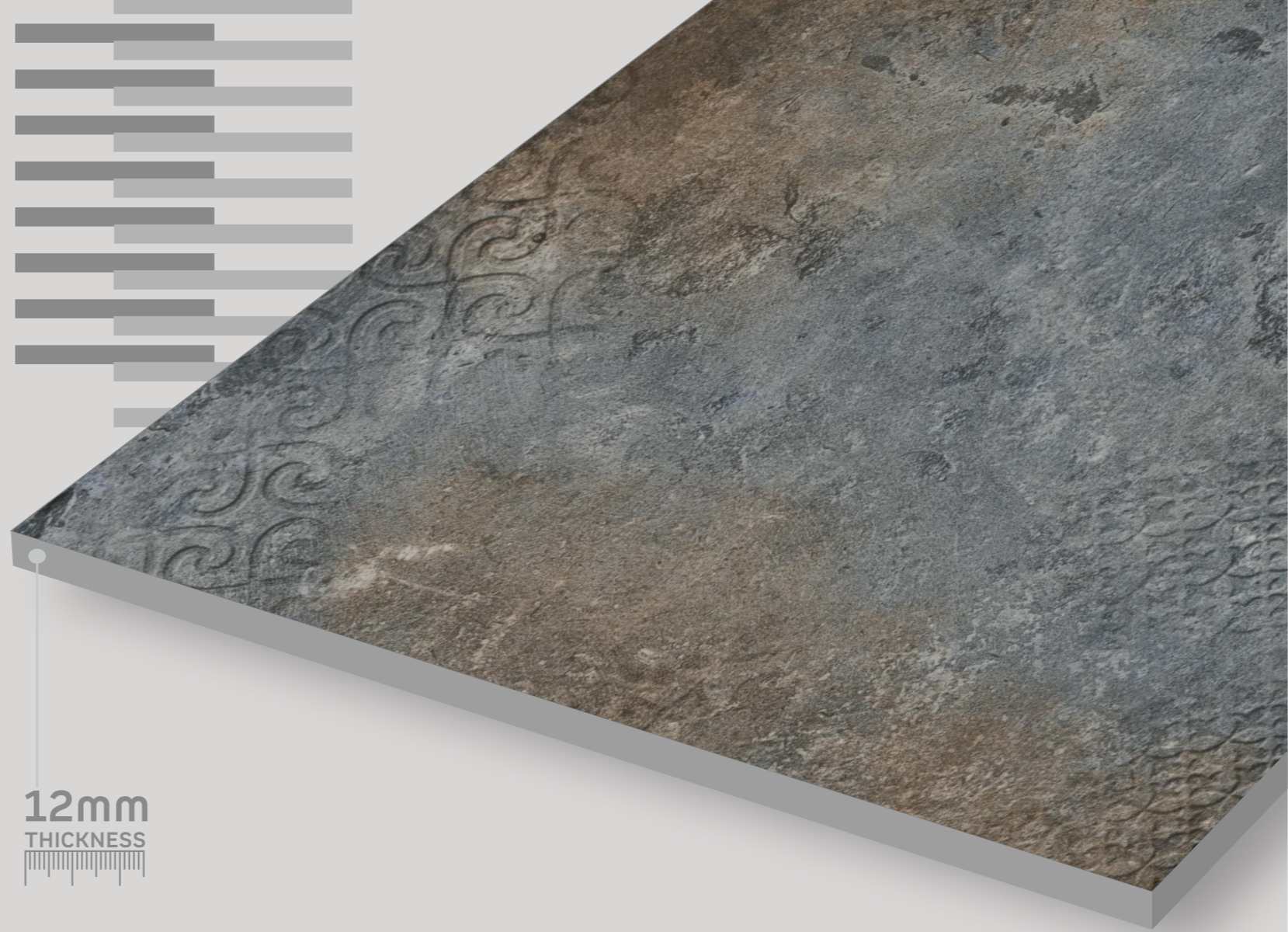



**30x
60cm**

An authentic blend of
premium durability



12mm
THICKNESS





Finish : Rustic Matt



LITESH SKY





Finish : Rustic Matt



LITESH GREY

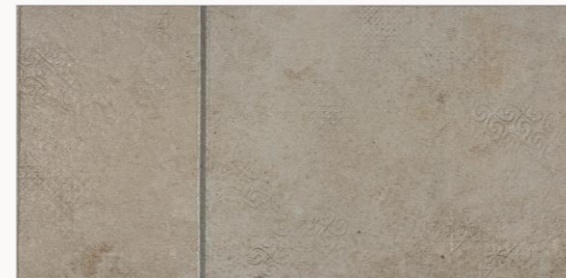




Finish : Rustic Matt



LITESH LIGHT





Finish : Rustic Matt



LITESH TERA





Finish : Rustic Matt



LITESH BROWN





Finish : Rustic Matt



LITISH ICE





Finish : Rustic Matt



LITESH MULTI





Finish : Rustic Matt



PEDRO PINK





Finish : Rustic Matt



PEDRO RUST





Finish : Rustic Matt



PEDRO BROWN





Finish : Rustic Matt



PEDRO TERACOTA





Finish : Rustic Matt



PEDRO CHOCO





Finish : Rustic Matt



PEDRO GREY

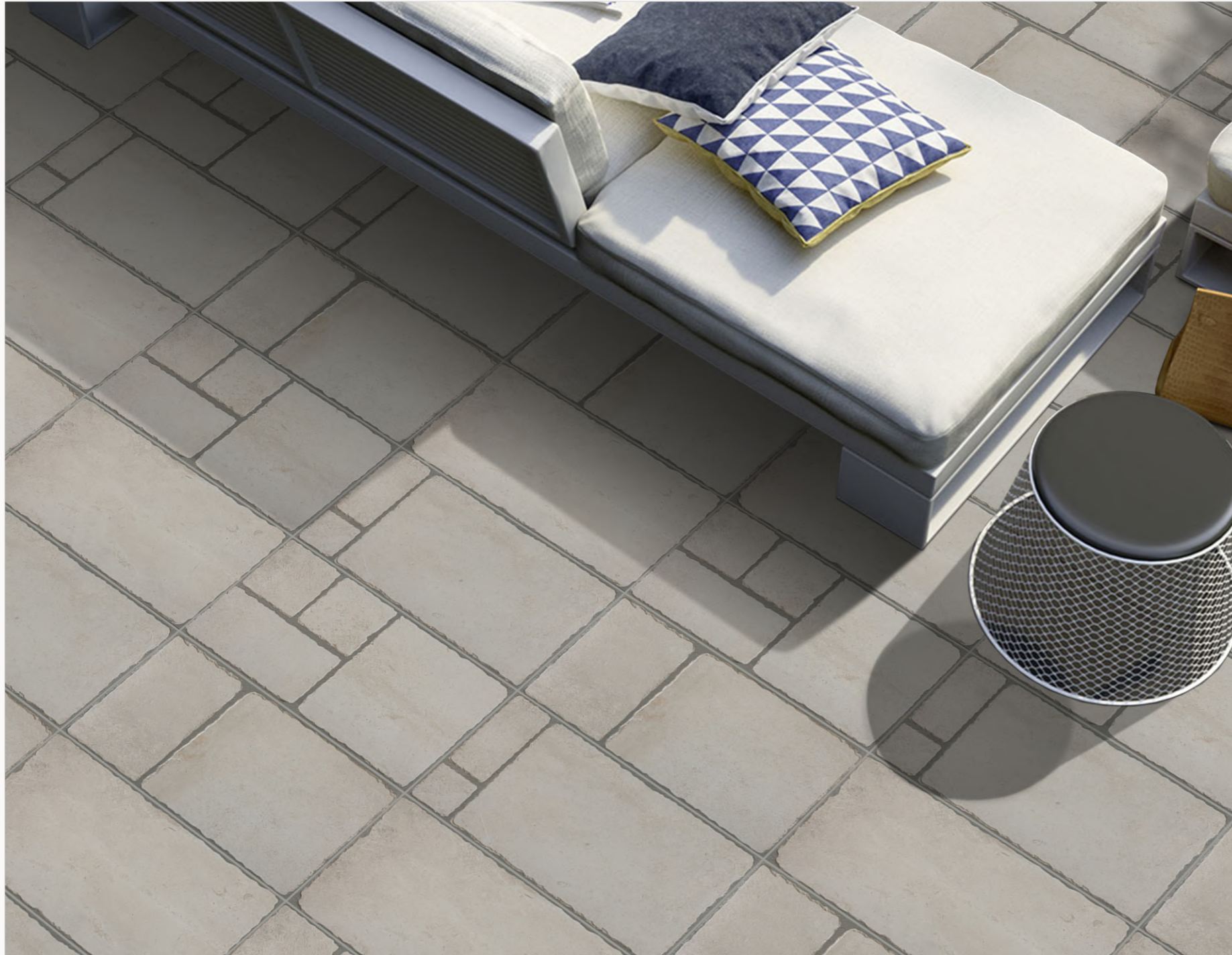
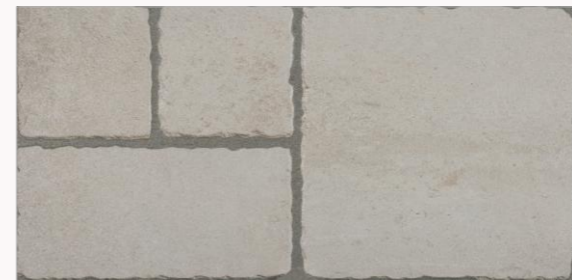




Finish : Rustic Matt



PEDRO ICE





Finish : Rustic Matt



ATLANTIS BROWN





Finish : Rustic Matt



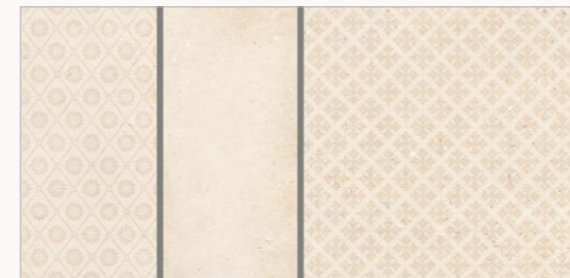
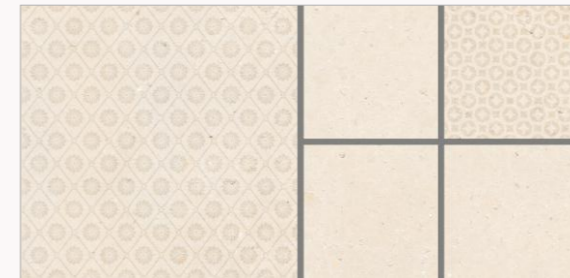
CAPACHINO BROWN



Finish : Rustic Matt

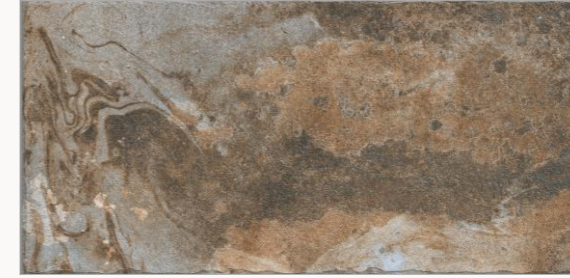


COLUMBIA IVORY





Finish : Rustic Matt



COLUMBIA STATE





Finish : Rustic Matt

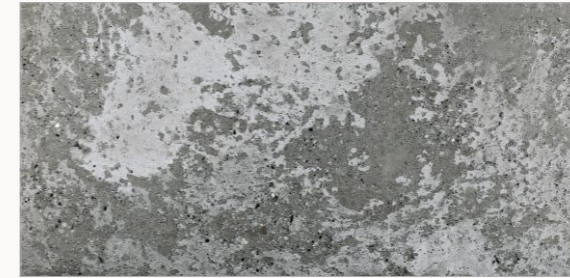


EARTH DECORA

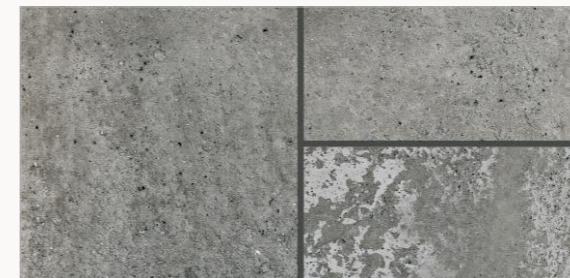
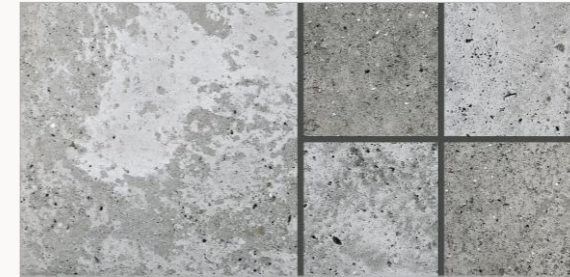




Finish : Rustic Matt



FLORENTINA GREY





Finish : Rustic Matt

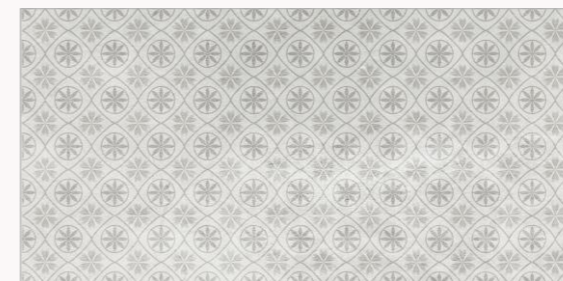


JUPITER IVORY

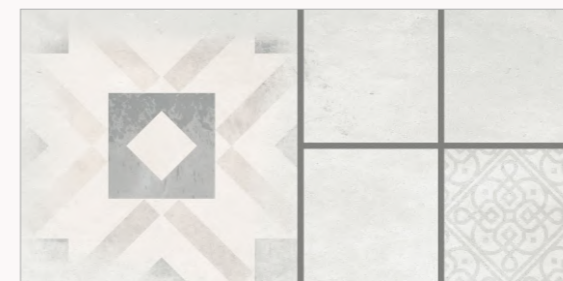




Finish : Rustic Matt



LAPIS GREY





Finish : Rustic Matt



MARS NATURAL

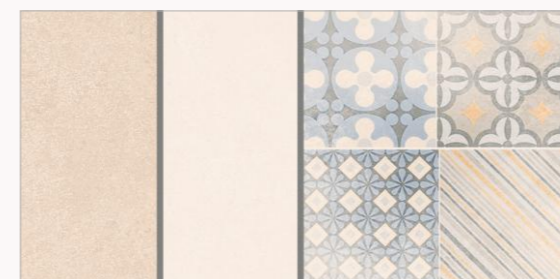
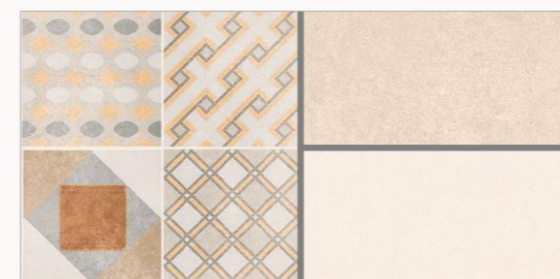
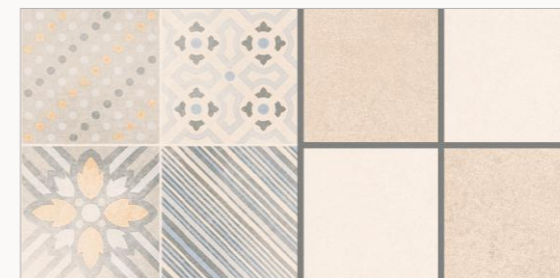




Finish : Rustic Matt



MARSELLA DECORA





Finish : Rustic Matt

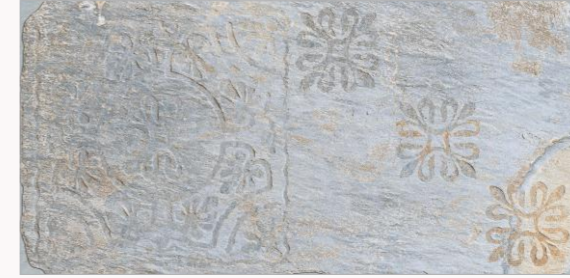


RAPIDO GREY





Finish : Rustic Matt



ROCCO AZUL





Finish : Rustic Matt



ROCCO IVORY





Finish : Rustic Matt



ROCCO NATURAL





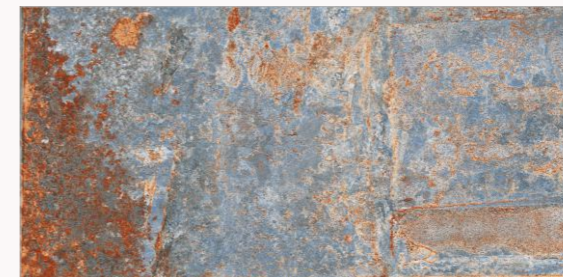
Finish : Rustic Matt



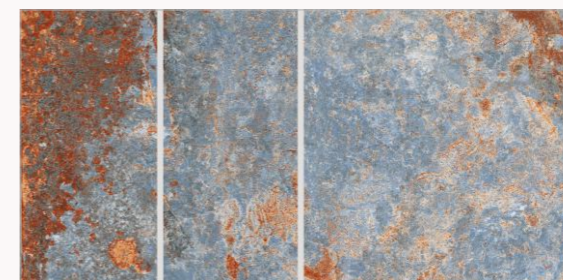
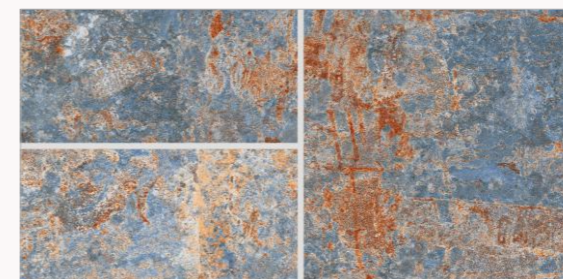
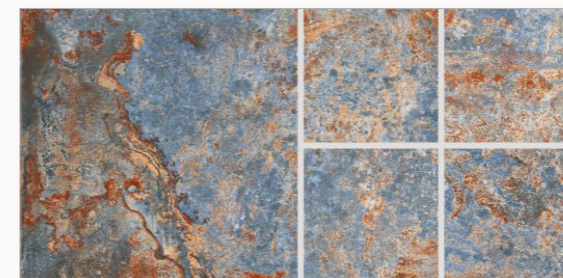
ROCCO RUBY



Finish : Rustic Matt



RUST AZUL





Finish : Rustic Matt



RUST NATURAL





Finish : Rustic Matt



UNICON NATURAL



Technical Specification

GVT (Normal Vitrified Body & Color Vitrified Body)

SR. NO.	CHARACTERISTIC	TEST METHOD	IS 15622 :2017 (GROUP B I a)	VARMORA VALUE	
A DIMENSION & SURFACE QUALITY					
1	Deviation in Length & Width	IS - 13630 - 1	± 0.10%	± 0.10%	
2	Deviation in Thickness	IS - 13630 - 1	± 5.00%	± 3.50%	
3	Straightness of sides	IS - 13630 - 1	± 0.10%	± 0.10%	
4	Rectangularity	IS - 13630 - 1	± 0.10%	± 0.10%	
5	Surface Flatness	IS - 13630 - 1	± 0.50%	± 0.20%	
6	Surface Quality	IS - 13630 - 1	Minimum 95 % of tiles shall be free from visible defects	95%	
B PHYSICAL PROPERTIES					
1	Water Absorption	IS - 13630 - 2	≤0.08%, Avg.	0.06%, Avg.	
2	Modulus of Rapture(N/mm ²)	IS - 13630 - 6	Avg. 35 N/mm ²	Avg. 38 N/mm ²	
3	Breaking Strength (N)	IS - 13630 - 6	Thickness <7.5 mm = 700 N, Min Thickness ≥7.5 mm = 1300 N, Min	Thickness ≥7.5 mm = 1500 N	
4	Moisture Expansion (mm/m)	IS - 13630 - 3	0.02 Max.	0.01 Max.	
5	Scratch Hardness of Surface (Mohs' Scale)	IS - 13630 - 13	5, Min	5, Min*	
6	Resistance of Surface Abrasion (Glazed tiles)	IS - 13630 - 11	Class II, Min.	Class IV	
7	Co-efficient of linear thermal expansion	IS - 13630 - 4	6x10 ⁻⁶ , Max	6x10 ⁻⁶ , Max	
8	Thermal Shock Resistance	IS - 13630 - 5	10 Cycles, Min	10 Cycles, Pass	
9	Crazing Resistance	IS - 13630 - 9	4 Cycles at 7.5 Bar ,Min	4 Cycles, Pass	
10	Impact Resistance- Coefficient of Restitution	IS - 13630 - 14	0.55, Min	0.55, Min	
11	Coefficient of Friction	-	Manufacturer Norms	Manufacturer Norms	
12	Frost Resistance	IS - 13630 - 10	Manufacturer Norms	No Damage	
13	Bulk Density (g/cc)	IS - 13630 - 2	2.2, Min	2.3, Min	
C CHEMICAL PROPERTIES					
1	Resistance to Staining	IS - 13630 - 8	Class 1, Min	Class 1, Min	
2	Resistance to Household Chemicals	IS - 13630 - 8	Class AA, Min	Class AA	
3	Resistance to Acids & Alkalis	IS - 13630 - 8	Required If agreed according to chemical resistance class indicated by manufacturer	Resistance	
Product Category		Body	Size	Coverage(sp. M.)	No. of Tiles/Box
Outdoor		GVT	300X600	0.72	4PCS

VARMORA Values given above are own valued, Which we tries to maintain, how ever test results may differ up to the limit prescribed under IS 15622 :2017 (GROUP B I a)
* Minimum 5 On matt tiles.

Note: Colour shown are as accurate as the limitations of the printing process will allow. Prospective customers are advised to inspect a sample of the tile before ordering. Our effort has been made to ensure the accuracy of the information given. However, the company reserve the right to change the specifications without prior notice. Sometime variations in shade or size being inherent to ceramic industry may occur. Before fixing, we advise you to follow the fixing instructions on the cartons (box) of the tiles. No responsibility will be accepted by the company once the tiles have been fixed.



VARMORA
TILES • BATHWARE

HEAD OFFICE

8/A National Highway, At. Dhuva, Tal. Wankaner, Morbi-363621, Gujarat, India

Tiles Contact:

Mob.: +91 98252 23068

E-mail: marketing@varmora.com

Bathware Contact:

Mob.: +91 90999 13129

E-mail: marketing@varmorasanitaryware.com

Mob.: +91 99139 23095

E-mail: customercare.faucets@varmora.com

Mob.: +91 90990 01734

E-mail: customercare.bathware@varmora.com

Mob.: +91 90990 01734

E-mail: customercare.sink@varmora.com

CORPORATE OFFICE

Varmora Granito Pvt. Ltd.
1004/5/6 South Tower, ONE42
Off Bopal-Ambli Road
Ahmedabad-380054, Gujarat,INDIA

REGIONAL OFFICE

A-54, 1st Floor, Elite Auto House
Mathuradas Vasanji Road, Andheri - Kurla Road
Andheri (East) Mumbai 400 093
Tel.: +91-22-4973 9179, Fax: +91-22-2838 9794
E-mail: mumbai@varmora.com

Tiles Customer Care:

1800 212 0053

Bathware Customer Care

1800 212 4525

Follow us:

