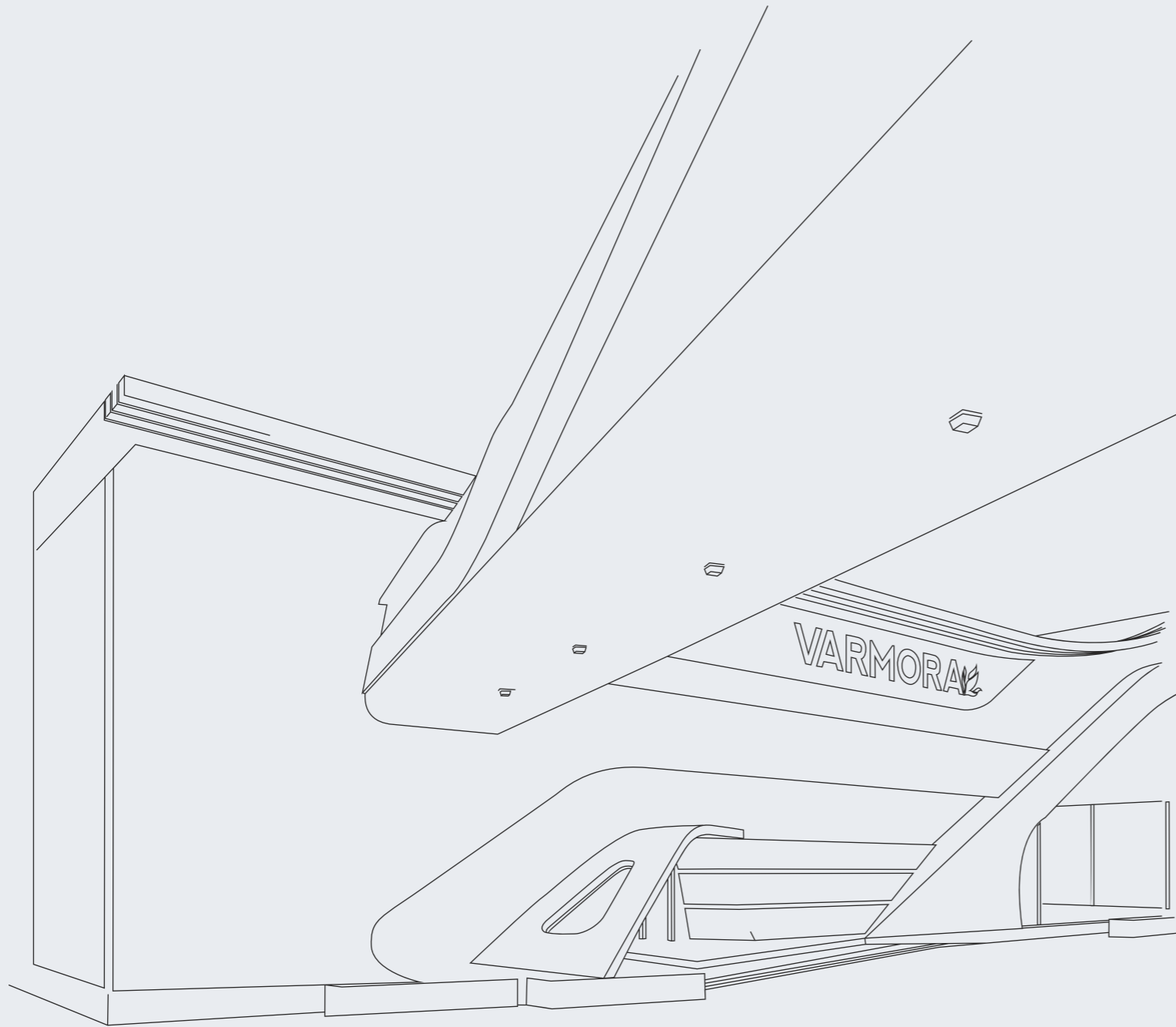


TRANSFORM YOUR
ELEVATION WITH
MODERN FINISHES

new
style

30x
45cm | ELEVATION



ABOUT US

Varmora Granito Pvt. Ltd. is a flagship company of the Varmora Group and a leading manufacturer of high-quality ceramic tiles, bath and sanitary products, and other building materials. Established in 1994, Varmora Granito has grown to become one of the largest manufacturers in the industry, with in-house production capacity of 35 msm per annum. With a focus on innovation, sustainability, and customer satisfaction, Varmora Granito is committed to providing its customers with the best products and services worldwide. Varmora now boasts 317 exclusive brand outlets (EBOs) and 2,000+ multi-brand outlets (MBOs) in their network. Whether you're looking for stylish tiles, durable bath and sanitary products, or other building materials, Varmora Granito has you covered.

To know more about Varmora Granito visit www.varmora.com





ABOUT THE TECHNOLOGY

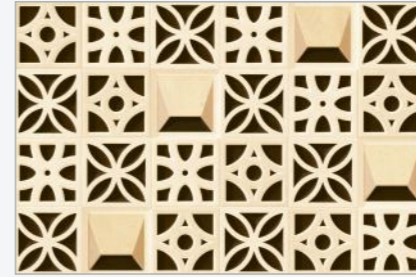
Discover the remarkable combination of traditional craftsmanship with the latest technology. We at Varmora strive for advancement in the ceramic world by infusing modern techniques and technology to craft impeccable and unique textures, designs, and layouts. The meticulously crafted tiles undergo a superior transition with the help of technology, showcasing versatile effects. Above all, vivid techniques are opted that add high aesthetic value to the tiles and through advanced machinery, the tiles are moulded and given a definite shape to blend with the decor style of spaces seamlessly.

STONE INSPIRATION

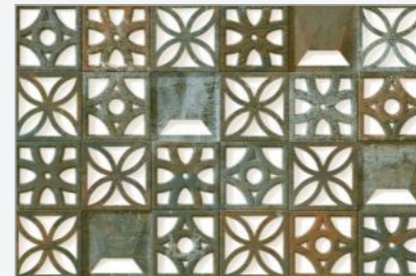
ELEVATION TILES combine style and substance, allowing you to redefine your surroundings with elegance. Explore a diverse collection of colours, textures, and patterns harmonising with architectural styles. Whether renovating your home or designing a commercial space, the elevation tiles provide endless opportunities to express individuality.



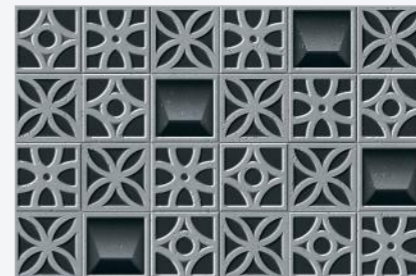
FRONTAL | Finish : RUSTIC MATT



BLOCK BEIGE



BLOCK AQUA

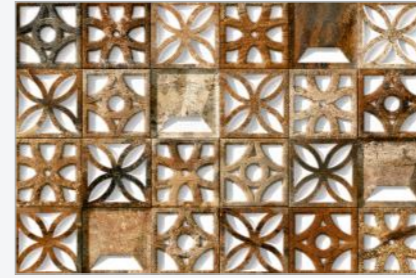


BLOCK GREY

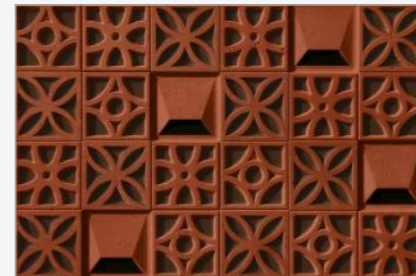




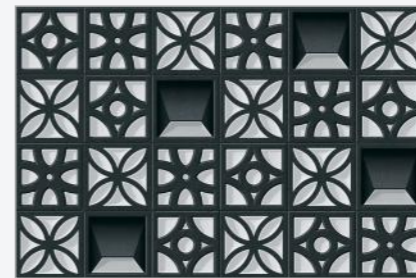
FRONTAL | Finish : RUSTIC MATT



BLOCK MIX



BLOCK RED



BLOCK NEGRO





FRONTAL | Finish : RUSTIC MATT



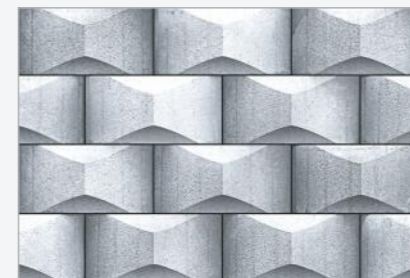
DONNA BEIGE



DONNA BROWN



FRONTAL | Finish : RUSTIC MATT



DONNA OFF GREY

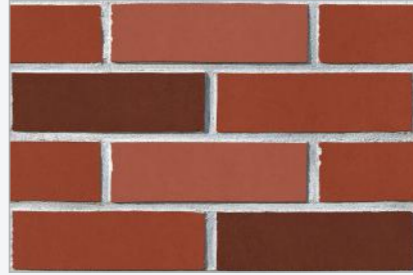


DONNA GREY





FRONTAL | Finish : RUSTIC MATT



EIT RED



EIT GREY



FRONTAL | Finish : RUSTIC MATT



HECTOR GREY



HECTOR BEIGE



HECTOR BROWN



FRONTAL | Finish : RUSTIC MATT



LUNA BEIGE



LUNA BROWN

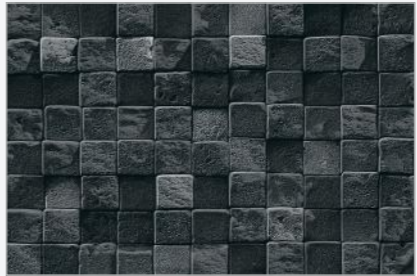




FRONTAL | Finish : RUSTIC MATT



LUNA GREY



LUNA NEGRO



FRONTAL | Finish : RUSTIC MATT



MILAGRO BIANCO



MILAGRO BEIGE



MILAGRO BROWN





FRONTAL | Finish : RUSTIC MATT



MILAGRO NATURAL



MILAGRO NEGRO





FRONTAL | Finish : RUSTIC MATT



VIOLETA BIANCO



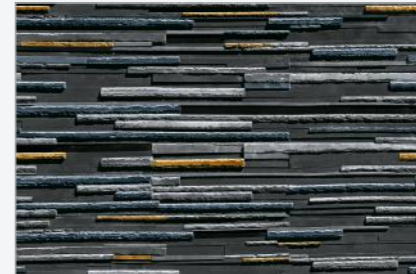
VIOLETA CREMA



FRONTAL | Finish : RUSTIC MATT



VIOLETA GREY



VIOLETA NEGRO

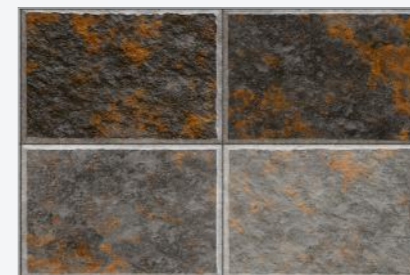




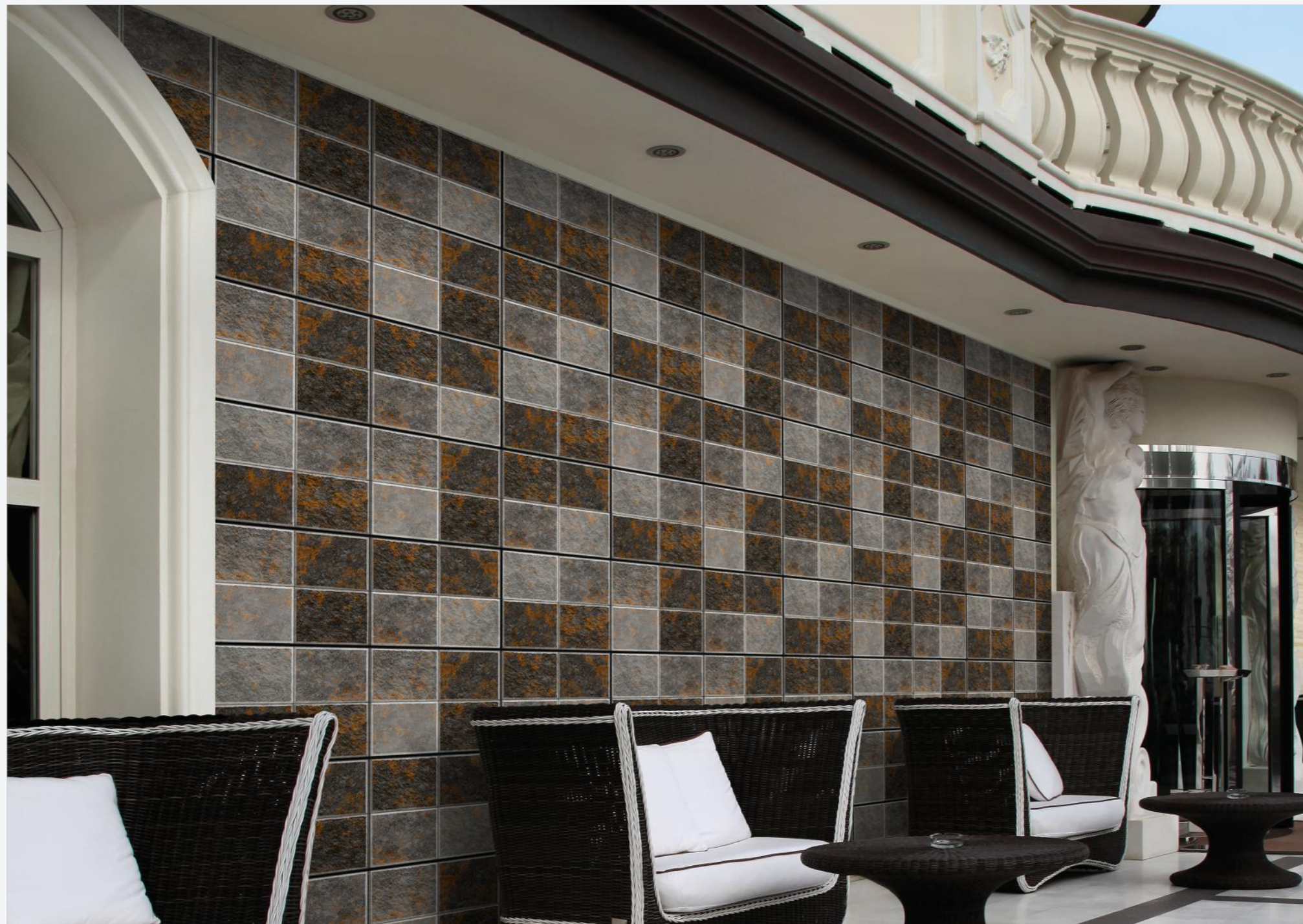
FRONTAL | Finish : RUSTIC MATT



AFFIX BUF



AFFIX BONZA





FRONTAL | Finish : RUSTIC MATT



AFFIX PEARL



AFFIX CARBON





FRONTAL | Finish : RUSTIC MATT



CANON BEIGE



CANON PEARL



CANON GRANITE





FRONTAL | Finish : RUSTIC MATT



CINDER NATURAL



CINDER BROWN



CINDER NERO



FRONTAL | Finish : RUSTIC MATT



EVEREST AZUL



FRONTAL | Finish : RUSTIC MATT



GRAINT BEIGE



GRAINT BRONZE



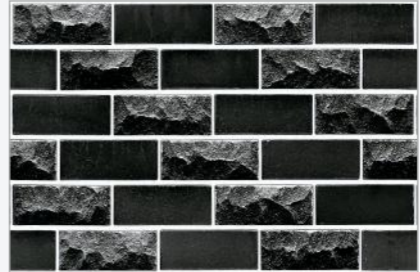
GRAINT MULTY



FRONTAL | Finish : RUSTIC MATT



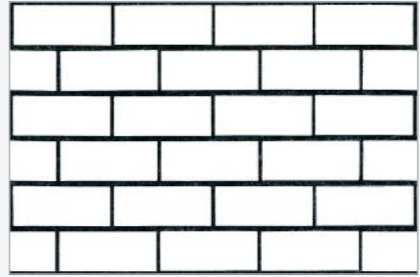
LOAF BEIGE



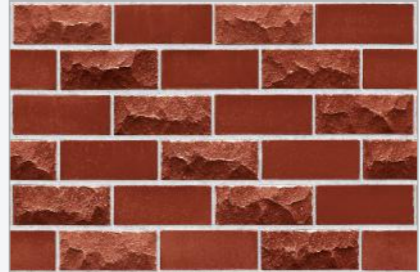
LOAF COAL



FRONTAL | Finish : RUSTIC MATT



LOAF WHITE



LOAF TERASTONE



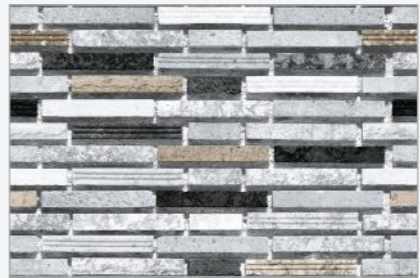
FRONTAL | Finish : RUSTIC MATT



MIKONOS BEIGE



FRONTAL | Finish : RUSTIC MATT



ROVER SILVER



ROVER MIX



ROVER STEEL



FRONTAL | Finish : RUSTIC MATT



ZINCK STONE GREY

TECHNICAL SPECIFICATION

SR. NO.	CHARACTERISTIC	TEST METHOD	IS 15622 :2017 (GROUP B I a)	VARMORA VALUE	
A					
DIMENSION & SURFACE QUALITY					
1	Deviation in Length & Width	IS - 13630 - 1	± 0.10%	± 0.10%	
2	Deviation in Thickness	IS - 13630 - 1	± 5.00%	± 3.50%	
3	Straightness of sides	IS - 13630 - 1	± 0.10%	± 0.10%	
4	Rectangularity	IS - 13630 - 1	± 0.10%	± 0.10%	
5	Surface Flatness	IS - 13630 - 1	± 0.50%	± 0.20%	
6	Surface Quality	IS - 13630 - 1	Minimum 95 % of tiles shall be free from visible defects	95%	
B					
PHYSICAL PROPERTIES					
1	Water Absorption	IS - 13630 - 2	≤0.08%,Avg.	0.06%,Avg.	
2	Modulus of Rapture(N/mm ²)	IS - 13630 - 6	Avg. 35 N/mm ²	Avg. 38 N/mm ²	
3	Breaking Strength (N)	IS - 13630 - 6	Thickness <7.5 mm = 700 N, Min Thickness ≥7.5 mm = 1300 N, Min	Thickness ≥7.5 mm = 1500 N	
4	Moisture Expansion (mm/m)	IS - 13630 - 3	0.02 Max.	0.01 Max.	
5	Scratch Hardness of Surface (Mohs' Scale)	IS - 13630 - 13	5, Min	5, Min*	
6	Resistance of Surface Abrasion (Glazed tiles)	IS - 13630 - 11	Class II, Min.	Class IV	
7	Co-efficient of linear thermal expansion	IS - 13630 - 4	6x10 ⁻⁶ , Max	6x10 ⁻⁶ , Max	
8	Thermal Shock Resistance	IS - 13630 - 5	10 Cycles, Min	10 Cycles, Pass	
9	Crazing Resistance	IS - 13630 - 9	4 Cycles at 7.5 Bar ,Min	4 Cycles, Pass	
10	Impact Resistance- Coefficient of Restitution	IS - 13630 - 14	0.55, Min	0.55, Min	
11	Coefficient of Friction	-	Manufacturer Norms	Manufacturer Norms	
12	Frost Resistance	IS - 13630 - 10	Manufacturer Norms	No Damage	
13	Bulk Density (g/cc)	IS - 13630 - 2	2.2, Min	2.3, Min	
C					
CHEMICAL PROPERTIES					
1	Resistance to Staining	IS - 13630 - 8	Class 1, Min	Class 1, Min	
2	Resistance to Household Chemicals	IS - 13630 - 8	Class AA,Min	Class AA	
3	Resistance to Acids & Alkalis	IS - 13630 - 8	Required If agreed according to chemical resistance class indicated by manufacturer	Resistance	
PRODUCT CATEGORY					
ELEVATION TILES		BODY	SIZE	COVERAGE Sq. M	NO. OF TILES/BOX
		GVT	300x450mm	0.9	5 PCS

VARMORA Values given above are own valued, Which we tries to maintain, how ever test results may differ up to the limit prescribed under IS 15622 :2017 (GROUP B I a)
* Minimum 5 On matt tiles.

Note: Colour shown are as accurate as the limitations of the printing process will allow. Prospective customers are advised to inspect a sample of the tile before ordering. Our effort has been made to ensure the accuracy of the information given. However, the company reserves the right to change the specifications without prior notice. Sometime variations in shade or size being inherent to ceramic industry may occur. Before fixing, we advise you to follow the fixing instructions on the cartons (box) of the tiles. No responsibility will be accepted by the company once the tiles have been fixed.



VARMORA

TILES • BATHWARE

HEAD OFFICE

8/A National Highway, At. Dhuva, Tal. Wankaner, Morbi-363621, Gujarat, India

Tiles Contact:

Mob.: +91 98252 23068

E-mail: marketing@varmora.com

Bathware Contact:

Mob.: +91 90999 13129

E-mail: marketing@varmorasanitaryware.com

Mob.: +91 99139 23095

E-mail: customercare.faucets@varmora.com

Mob.: +91 90990 01734

E-mail: customercare.bathware@varmora.com

Mob.: +91 90990 01734

E-mail: customercare.sink@varmora.com

CORPORATE OFFICE

Varmora Granito Pvt. Ltd.
1004/5/6 South Tower, ONE42
Off Bopal-Ambli Road
Ahmedabad-380054, Gujarat,INDIA

REGIONAL OFFICE

A-54, 1st Floor, Elite Auto House
Mathuradas Vasanji Road, Andheri - Kurla Road
Andheri (East) Mumbai 400 093
Tel.: +91-22-4973 9179, Fax: +91-22-2838 9794
E-mail: mumbai@varmora.com

Tiles Customer Care:

1800 212 0053

Bathware Customer Care

1800 212 4525

Follow us:

